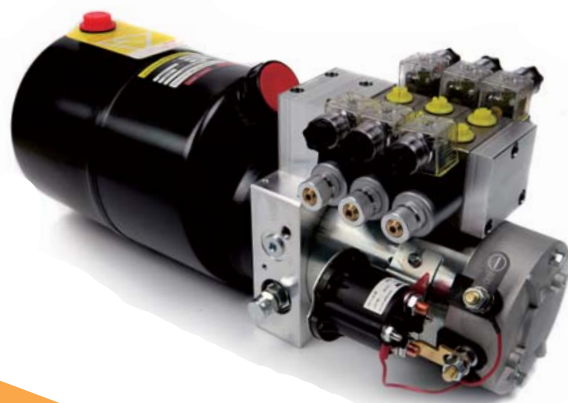


// Modular Design, Compact Size

// High Quality Parts

// 100% End of Line Test

// Flexible Capability for DIY



Type 06, Single Acting	Page A1-6
Type 13, Double Acting, Single-output, Cetop5(D03) Valve	Page A1-13
Type 14, Double Acting, Expandable Circuit with Cetop5(D03) Valve	Page A1-18
Type 15, Double Acting, Expandable Circuit with Sectional Valve	Page A1-21
Type 21, Double Acting, with Screw-in Cartridge valves	Page A1-20
Type 07, Single Acting, Dual-output	Page A1-32
Type 97, Circuit for Truck Tailgate	Page A1-35

Group 01D, 03D, 05D and 08D

*Grouped by Motor Rated Power

Group 01D - Rated Power 150W (DC12V and 24V)

Pump Displacement	0.19cc	0.26cc	0.38cc	0.50cc
<i>Rated Pressure</i>	22MPa(3200PSI)	20MPa(2900PSI)	14MPa (2000PSI)	10MPa(1450PSI)
<i>Flow Rate @ Rated Pressure</i>	0.3LPM(0.08GPM)	0.47LPM(0.12GPM)	0.68LPM(0.18GPM)	0.9LPM(0.23GPM)
<i>Max Pressure</i>	25MPa(3600PSI)	25MPa(3600PSI)	18MPa(2600PSI)	13MPa(1900PSI)
<i>Flow Rate @ Max. Pressure</i>	0.15LPM(0.04GPM)	0.23LPM(0.06GPM)	0.4LPM(0.1GPM)	0.54LPM(0.14GPM)

Group 03D - Rated Power 350kW (DC12V and 24V)

Pump Displacement	0.38cc	0.5cc	0.65cc	0.75cc
<i>Rated Pressure</i>	22MPa(3200PSI)	16MPa (2300PSI)	13MPa(1900PSI)	11MPa(1600PSI)
<i>Flow Rate @ Rated Pressure</i>	0.68LPM(0.18GPM)	0.9LPM(0.23GPM)	1.1LPM(0.29GPM)	1.2LPM(0.31GPM)
<i>Max Pressure</i>	25MPa(3600PSI)	19MPa(2800PSI)	16MPa(2300PSI)	15MPa(2200PSI)
<i>Flow Rate @ Max. Pressure</i>	0.34LPM(0.09GPM)	0.5LPM(0.13GPM)	0.7LPM(0.18GPM)	0.8LPM(0.21GPM)

Group 05D - Rated Power 500W (DC12V and 24V)

Pump Displacement	0.5cc	0.65cc	0.75cc	0.88cc
<i>Rated Pressure</i>	22MPa(3200PSI)	18MPa (2600PSI)	15MPa (2200PSI)	12MPa (1700PSI)
<i>Flow Rate @ Rated Pressure</i>	1LPM(0.26GPM)	1.3LPM (0.34GPM)	1.5LPM (0.4GPM)	2LPM (0.52GPM)
<i>Max Pressure</i>	25MPa(3600PSI)	20MPa (2900PSI)	17MPa (2500PSI)	15MPa (2200PSI)
<i>Flow Rate @ Max. Pressure</i>	0.5LPM(0.13GPM)	0.9LPM (0.23GPM)	1.2LPM (0.31GPM)	1.6LPM (0.42GPM)

Group 08D - Rated Power 800W (DC12V and 24V)

Pump Displacement	0.65cc	0.88cc	1.0cc	1.25cc
<i>Rated Pressure</i>	20MPa (2900PSI)	13MPa (1900PSI)	11MPa (1600PSI)	9MPa (1300PSI)
<i>Flow Rate @ Rated Pressure</i>	1.6LPM (0.42GPM)	2.5LPM (0.66GPM)	2.6LPM (0.68GPM)	3.2LPM (0.84LPM)
<i>Max Pressure</i>	22MPa (3200PSI)	16MPa (2300PSI)	14MPa (2000PSI)	11MPa (1600PSI)
<i>Flow Rate @ Max. Pressure</i>	1.1LPM (0.29GPM)	2.2LPM (0.58GPM)	2LPM (0.52GPM)	2.6LPM (0.68GPM)

Chart of Flow Rated vs. Pressure

DP13
Series

DC
Hydraulic Power Unit

Group 16D, 22D, 25D, 28D

*Grouped by Motor Rated Power

Group 16D - Rated Power 1.6W (12V only)

Pump Displacement	1.1cc	1.3cc	1.6cc	2.1cc
<i>Rated Pressure</i>	22MPa(3200PSI)	20MPa(2900PSI)	16MPa (2300PSI)	13MPa(1900PSI)
<i>Flow Rate @ Rated Pressure</i>	1.4LPM(0.37GPM)	1.7LPM(0.45GPM)	3.7LPM(1GPM)	4.8LPM(1.28GPM)
<i>Max Pressure</i>	27MPa(3900PSI)	27MPa(3900PSI)	23MPa(3300PSI)	21MPa(3000PSI)
<i>Flow Rate @ Max. Pressure</i>	1.1LPM(0.28GPM)	1.2LPM(0.32GPM)	2LPM(0.5GPM)	2.4LPM(0.6GPM)

Group 22D - Rated Power 2.2kW (24V only)

Pump Displacement	1.3cc	1.6cc	2.1cc	2.7cc
<i>Rated Pressure</i>	25MPa(3600PSI)	22MPa (3200PSI)	18MPa(2600PSI)	13MPa(1880PSI)
<i>Flow Rate @ Rated Pressure</i>	1.7LPM(0.45GPM)	2.2LPM(0.58GPM)	4.8LPM(1.2GPM)	6.2LPM(1.6GPM)
<i>Max Pressure</i>	27MPa(3900PSI)	25MPa(3600PSI)	23MPa(3300PSI)	18MPa(2600PSI)
<i>Flow Rate @ Max. Pressure</i>	1.3LPM(0.34GPM)	1.8LPM(0.47GPM)	2.6LPM(0.68GPM)	5LPM(1.3GPM)

Group 25D - Rated Power 2.5kW (12V and 24V)

Pump Displacement	1.6cc	2.1cc	2.7cc	3.2cc
<i>Rated Pressure</i>	27MPa(3900PSI)	21MPa (3000PSI)	16MPa (2500PSI)	14MPa (2000PSI)
<i>Flow Rate @ Rated Pressure</i>	2.2LPM(0.58GPM)	3.9LPM (1GPM)	5LPM (1.32GPM)	6.2LPM (1.6GPM)
<i>Max Pressure</i>	29MPa(4200PSI)	27MPa (3900PSI)	20MPa (2900PSI)	20MPa (2900PSI)
<i>Flow Rate @ Max. Pressure</i>	1.8LPM(0.47GPM)	2.6LPM (0.68GPM)	3.8LPM (1.0GPM)	4.8LPM (1.2GPM)

Group 28D - Rated Power 2.8kW (24V only)

Pump Displacement	1.6cc	2.1cc	2.7cc	3.2cc
<i>Rated Pressure</i>	25MPa (3600PSI)	18MPa (2600PSI)	14MPa (2000PSI)	10MPa (1450PSI)
<i>Flow Rate @ Rated Pressure</i>	4LPM (1.1GPM)	6LPM (1.5GPM)	7.8LPM (2.0GPM)	10LPM (2.7LPM)
<i>Max Pressure</i>	30MPa (4350PSI)	28MPa (4000PSI)	24MPa (3400PSI)	20MPa (2900PSI)
<i>Flow Rate @ Max. Pressure</i>	2.5LPM (0.6GPM)	3.2LPM (0.8GPM)	4.5LPM (1.1GPM)	4.8LPM (1.2GPM)

Chart of Flow Rated vs. Pressure

DP13
Series

DC
Hydraulic Power Unit

Group 30D, 40D, 45D

*Grouped by Motor Rated Power

Group 30D - Rated Power 3.0KW (12V only)

Pump Displacement	2.7cc	3.2cc	3.7cc	4.2cc
<i>Rated Pressure</i>	18MPa(2600PSI)	16MPa(2300PSI)	13MPa (1900PSI)	11MPa(1600PSI)
<i>Flow Rate @ Rated Pressure</i>	4.8LPM(1.2GPM)	6.2LPM(1.6GPM)	6.7LPM(1.76GPM)	8LPM(2.11GPM)
<i>Max Pressure</i>	27MPa(3900PSI)	27MPa(3900PSI)	26MPa(3770PSI)	22MPa(3200PSI)
<i>Flow Rate @ Max. Pressure</i>	2.6LPM(0.68GPM)	2.7LPM(0.71GPM)	2.85LPM(0.75GPM)	3.25LPM(0.85GPM)

Group 30D - Rated Power 3kW (24V only)

Pump Displacement	2.7cc	3.2cc	3.7cc	4.2cc
<i>Rated Pressure</i>	18MPa(2600PSI)	16MPa (2300PSI)	13MPa(1900PSI)	11MPa(1600PSI)
<i>Flow Rate @ Rated Pressure</i>	6.2LPM(1.6GPM)	8LPM(2.11GPM)	10LPM(2.7GPM)	10.7LPM(2.8GPM)
<i>Max Pressure</i>	27MPa(3900PSI)	27MPa(3900PSI)	26MPa(3770PSI)	22MPa(3200PSI)
<i>Flow Rate @ Max. Pressure</i>	3.8LPM(1.0GPM)	4.4LPM(1.16GPM)	4.8LPM(1.2GPM)	5.5LPM(1.4GPM)

Group 40D - Rated Power 4.0kW (24V only)

Pump Displacement	3.7cc	4.2cc	4.8cc	5.8cc
<i>Rated Pressure</i>	14MPa(2000PSI)	11MPa (1600PSI)	10MPa (1450PSI)	9MPa (1300PSI)
<i>Flow Rate @ Rated Pressure</i>	9LPM(2.38GPM)	10LPM (2.7GPM)	11.7LPM (3.1GPM)	14LPM (3.8GPM)
<i>Max Pressure</i>	24MPa(3500PSI)	22MPa (3200PSI)	20MPa (2900PSI)	16MPa (2320PSI)
<i>Flow Rate @ Max. Pressure</i>	4.6LPM(1.22GPM)	5LPM (1.32GPM)	6.4LPM (1.7GPM)	8LPM (2.11GPM)

Group 45D - Rated Power 4.5kW (24V only)

Pump Displacement	4.2cc	4.8cc	5.8cc	7.0cc
<i>Rated Pressure</i>	16MPa (2300PSI)	15MPa (2180PSI)	13MPa (1900PSI)	10MPa (1450PSI)
<i>Flow Rate @ Rated Pressure</i>	9.1LPM (2.4GPM)	10.4LPM (2.75GPM)	12.5LPM (3.3GPM)	15LPM (4GPM)
<i>Max Pressure</i>	27MPa (3900PSI)	27MPa (3900PSI)	22MPa (3200PSI)	18MPa (2600PSI)
<i>Flow Rate @ Max. Pressure</i>	4.3LPM (1.13GPM)	4.9LPM (1.3GPM)	5.95LPM (1.57GPM)	7.18LPM (1.9GPM)

DP13	M	06	-	4	16	A	-	LS4	-	01
(1)	(2)	(3)		(6)	(7)	(8)		(9)		(10)

DP13	C	13	Y	-	4	16	A	-	RP1	-	01
(1)	(2)	(3)	(4)		(6)	(7)	(8)		(9)		(10)

—— For Function Type 13 only

DP13	V	14	Y	3	-	4	16	A	-	RP1	-	01
(1)	(2)	(3)	(4)	(5)		(6)	(7)	(8)		(9)		(10)

—— For Function Type 14/15 only

(1) DP13 Series - DC Hydraulic Power Unit

(2) Style of Central Manifold : M - Machined Manifold from Aluminum Bar, C - Aluminum Die Casting Manifold

Function Type 14/15 only V - Manifold for Vertical Mounting, H - Manifold for Horizontal Mounting

(3) Function Type (Hydraulic Circuit) : 01, 03, 06, 21, 31...

13 - Double Acting Circuit, with Cetop3 (D03) 3/4 Directional Valve.

14 - Expandable Double Acting Circuit, with Cetop3 (D03) 3/4 Directional Valve.

15 - Expandable Double Acting Circuit, with Sectional 3/4 Directional Valve.

(4) Function Code of 3/4 Directional Valve : E, Y, H etc... compatible with Rexroth

(5) Number of Directional Valves Installed.

(6) Motor Series (Size) : 3- 3" Motor, 4- 4" Motor, 5 -5" Motor

(7) Rated Power of DC Motor :

3" DC Motor : 01 - 150W, 03 - 350W, 05 - 500W, 08 - 800W

4" DC Motor : 16 - 1.6kW, 22 - 2.2kW, 25 - 2.5kW, 28 - 2.8kW

5" DC Motor : 30 - 3.0Kw, 40 - 4.0kW

(8) Voltage of DC Motor : A - DC12V, B - DC24V, C- DC36V

(9) Code of Oil Tank : MS- MS tank; RP - RP Tank; etc....

(10) Design Number, specified by Mocen.

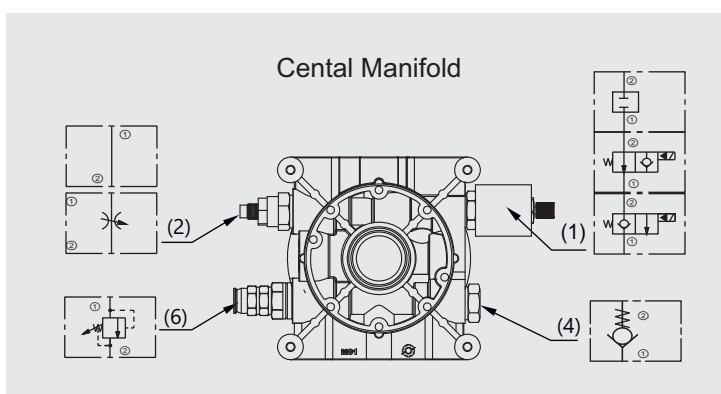
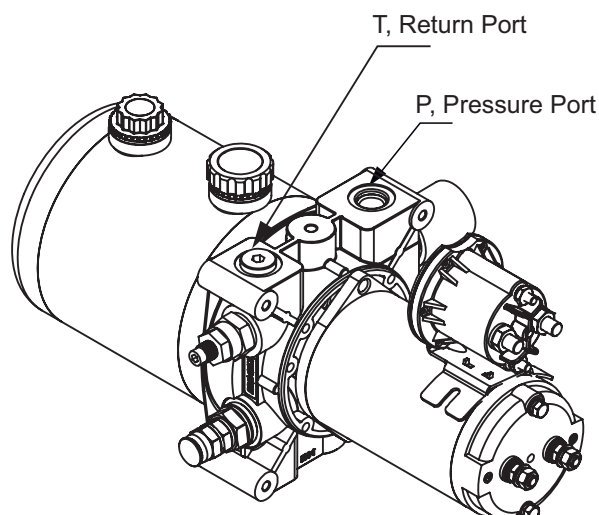
DP13C06-3

Group 01D/03D/05D/08D (150W to 800W)

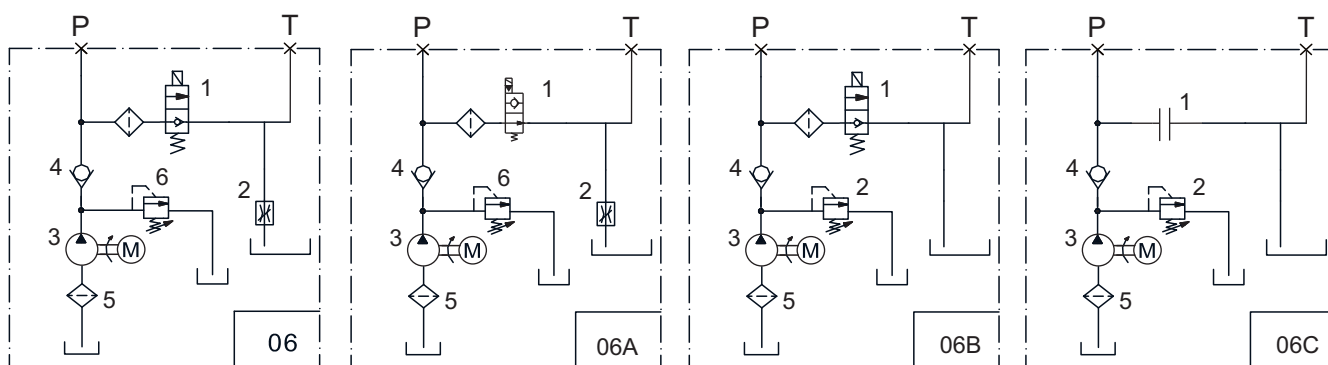
- Driving single acting hydraulic cylinder extending or retracting.
- Choose the appropriate power and pump size according to the load of your application. Please refer to Page A1-1 or consult us.
- Four options for controlling the Return Flow (down speed) by flow control valve (2):
 1. Non-Adjustable.
 2. Non Adjustable, with pressure compensate.
 3. Adjustable, with pressure compensate.
 4. No return flow control
- Three options for 2-way valve(1), more details refer to page DD.
 1. Manual Valve.
 2. Solenoid Valve.
 3. Solenoid Valve with Manual Override
- Duty cycle is generally S2-1 minute, S3 - 15%.
It may be varies with loads , please consult us.
- Port P and T, standard options:
 1. G3/8 (BSPP 3/8")
 2. SAE#6(9/16-18UNF),
 3. M14
 To custom-built other port size, please consult us.
- Optional Tanks:

Type MS, and Type LS, RP, LT and MT.
- Controller Options:
 - 1) KCB21, the basic remote control handset.
 - 2) WRB21, economy wireless remote
- Popular Applications:

Material Handling forklift, stacker, dumper, dump trailer, Mobile lighthouse...etc.



Typical Circuits:



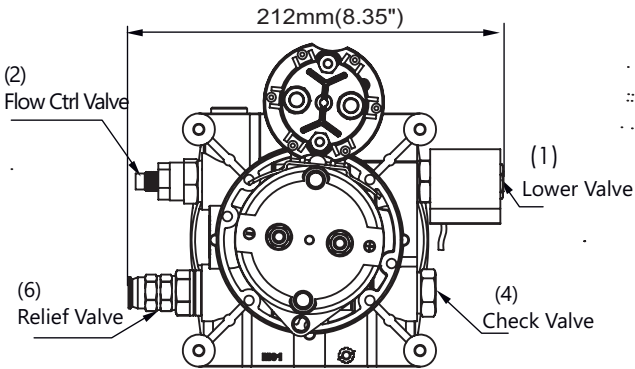
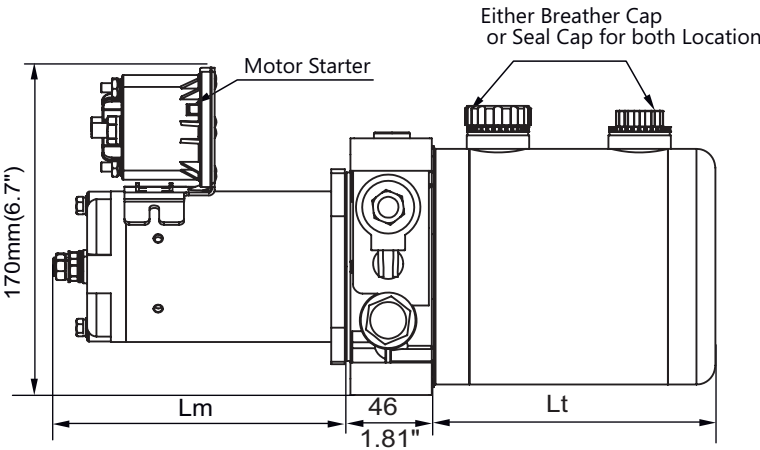
DP13C06-3 with 3" DC Motor

	Motor P/N	Voltage	Rated Power	Dim "Lm"	Shaft Coupling
DP13C06-301	301A(301B)	12V(24V)	150W	4.25"(108mm)	CP18-50
DP13C06-303	303A(303B)	12V(24V)	350W	5.39" (137mm)	
DP13C06-305	305A (305B)	12V (24V)	500W	5.39" (137mm)	
DP13C06-308	308A (308B)	12V (24V)	800W	5.39" (137mm)	

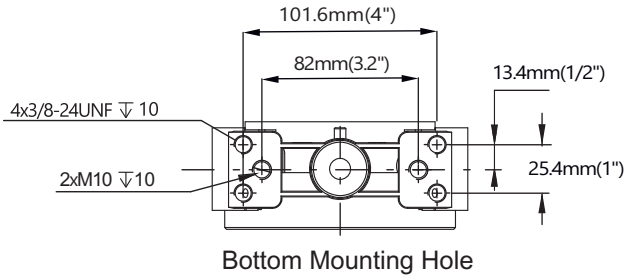


Configuration

DC Motor :	3 Series (150w-800w)
Main Manifold:	M01-03 (Die Casting Aluminum Manifold)
Gear Pump:	S Series (Details refer to page S02)
Tank:	Type MS (Details refer to page N1)



* Optional Tanks: Type LS, RP, LT and MT



Tank Size

P/N	MS1	MS2	MS3	MS4	MS5	MS6	MS7	MS8
Lt	5.9" 150mm	7.9" 200mm	9.84" 250mm	11.34" 300mm	13.34" 350mm	15.34" 400mm	21.34" 450mm	21.65" 550mm
Volume	1.0Qt 1L	1.5Qt 1.4L	2.0Qt. 1.8L	2.5Qt. 2.4L	3.0Qt. 2.8L	3.5Qt 3.3L	4.0Qt. 3.8L	5.0Qt. 4.75L

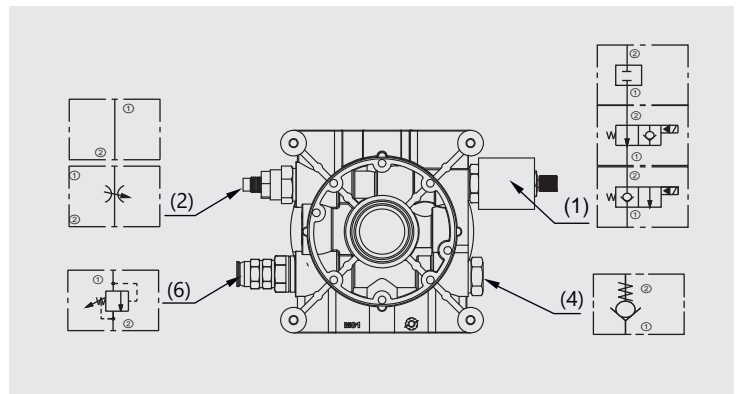
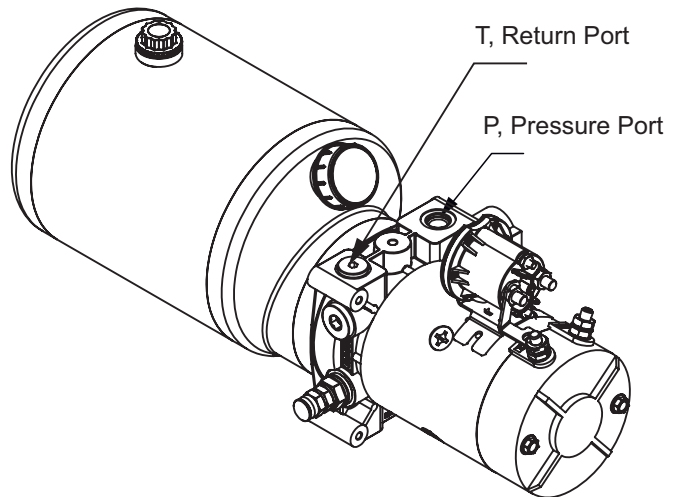
DP13C06

Group 16D/22D/25D/28D/30D/40D

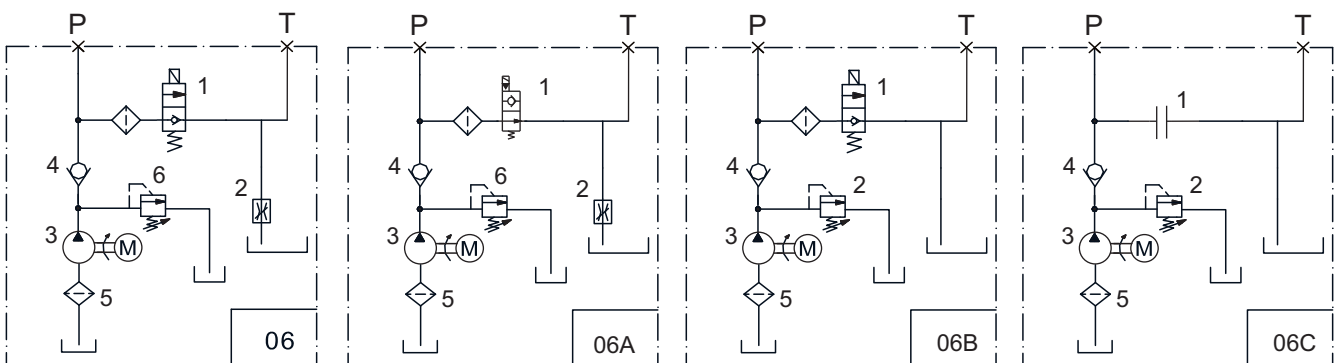
- Driving single acting hydraulic cylinder extending or retracting.
- Choose the appropriate power and pump size according to the load of your application. Please refer to Page A1-1 or consult us.
- Four options for controlling the Return Flow (down speed) by flow control valve (2):
 1. Non-Adjustable.
 2. Non Adjustable, with pressure compensate .
 3. Adjustable, with pressure compensate .
 4. No return flow control
- Three options for 2-way valve(1), more details refer to page DD.
 1. Manual Valve.
 2. Solenoid Valve.
 3. Solenoid Valve with Manual Override
- Duty cycle is generally S2-1 minute, S3 - 15%.
It may be varies with loads , please consult us.
- Port P and T, standard options:
 1. G3/8 (BSPP 3/8")
 2. SAE#6(9/16-18UNF),
 3. M14
 To custom-built other port size, please consult us.
- Optional Tanks:

Series RP, LS, LT, MS, MT, details refer to page BB.
- Controller Options:
 - 1) KCB21, the basic remote control handset.
 - 2) WRB21, economy wireless remote
- Popular Applications:

Material Handling forklift, stacker, dumper, dump trailer, Mobile lighthouse...etc.

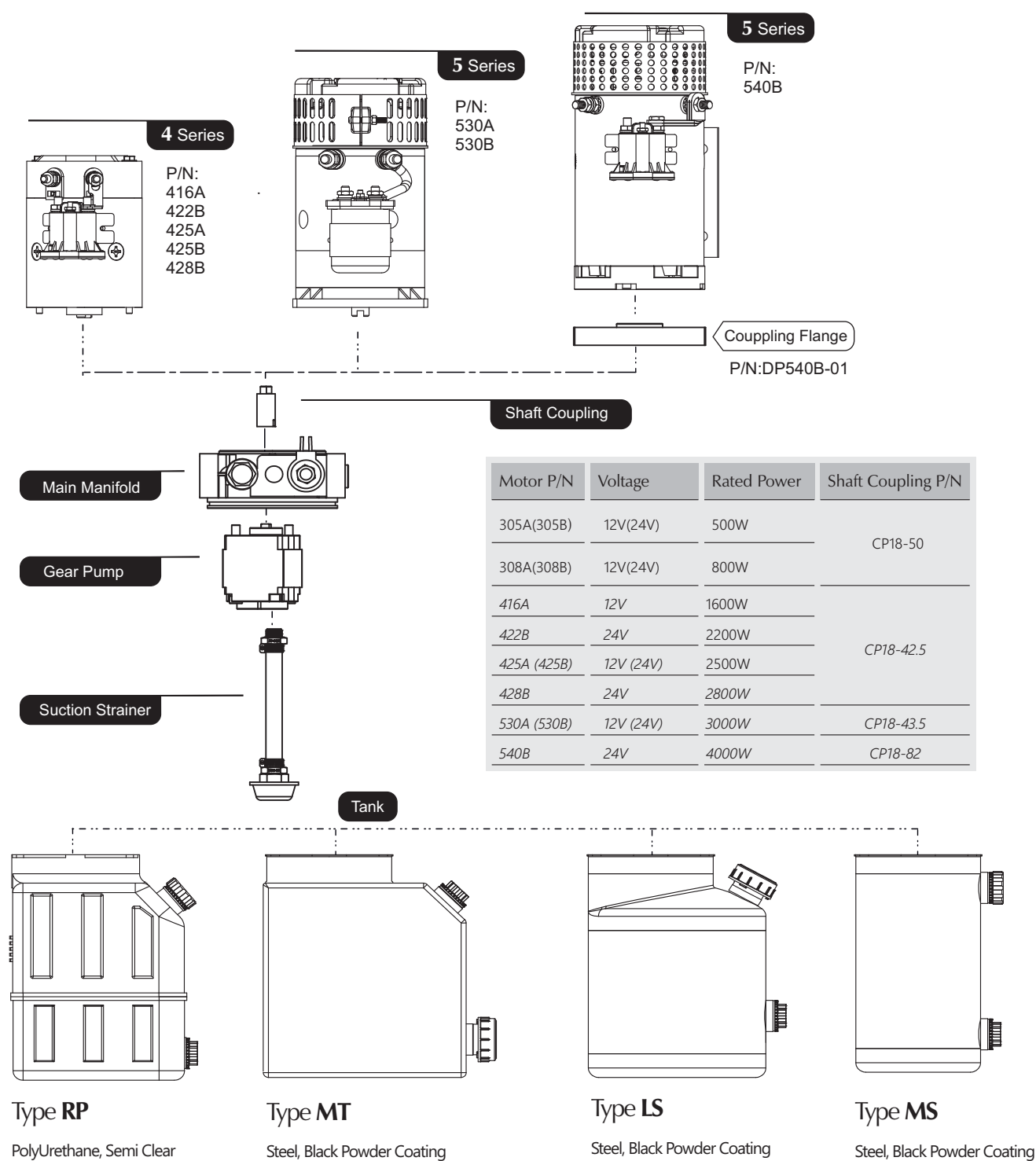


Typical Circuits:



DP13C06

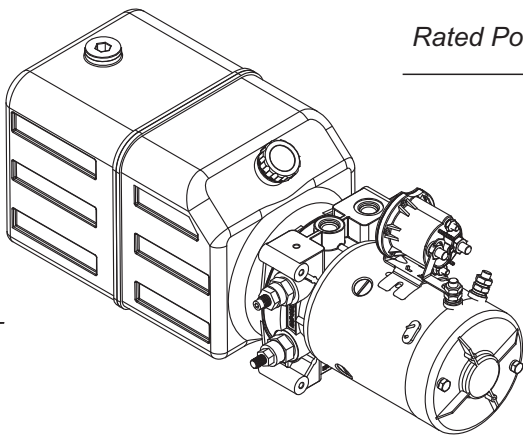
DC Motor :	4" Series, 5" Series
Main Manifold	M01-03 (Die Casting Aluminum Manifold)
Gear Pump	G Series (Details refer to page G1-1)
Tank	Type RP, LS, LT, MS, MT, MR (Details refer to page N1)



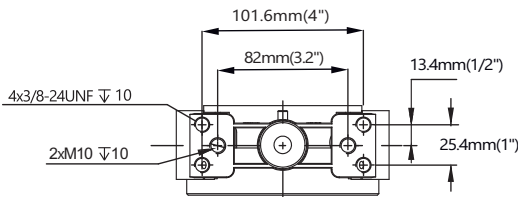
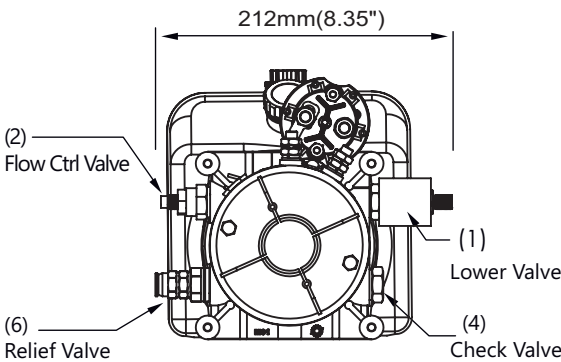
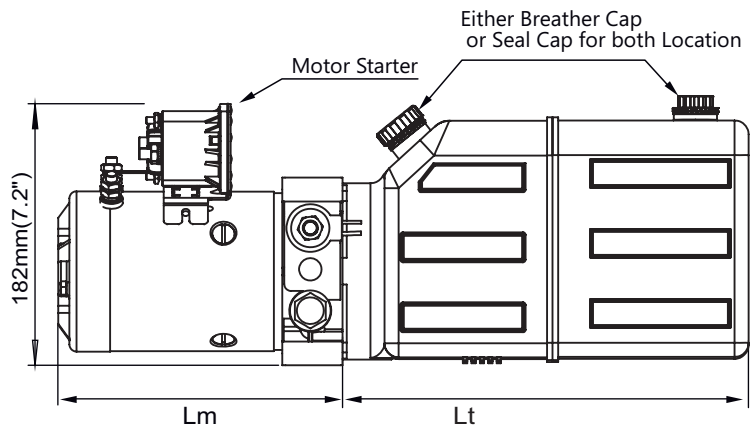
DP13C06-4 with 4" DC Motor

Outline Diemnsions
Group 16D/22D/25D/28D

	DP13M06-416	DP13M06-422	DP13M06-425	DP13M06-428
Dim "Lm"	8" 203mm	8" 203mm	8.78" 223mm	9.85" 250mm
Rated Power	1.6kW (12V)	2.2kW (24V)	2.5kW (12&24V)	2.8kw (24V)



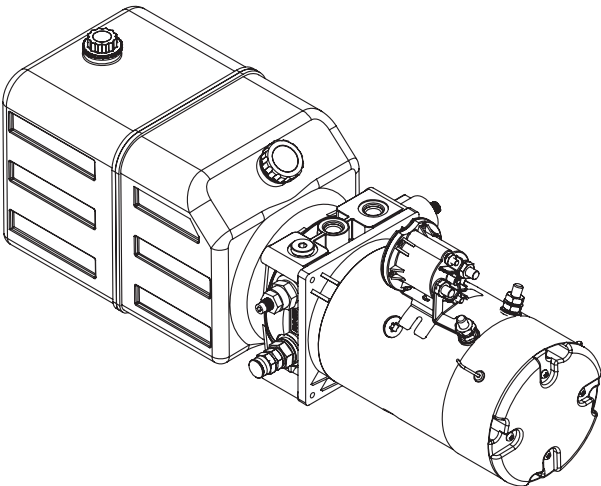
RP tank showed in following drawings. The dimension "Lt" of RP tank or other optional tanks, please refer to page N1-1.



Bottom Mounting Hole

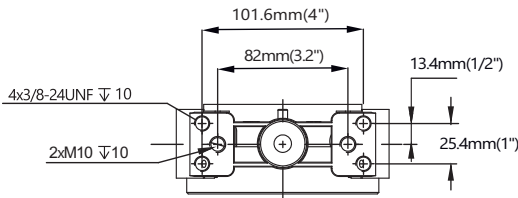
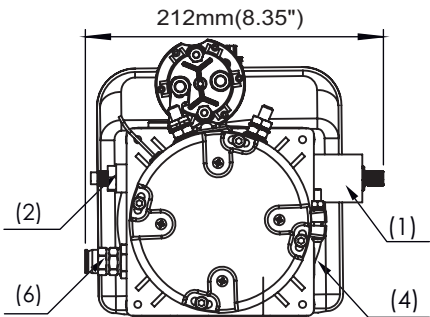
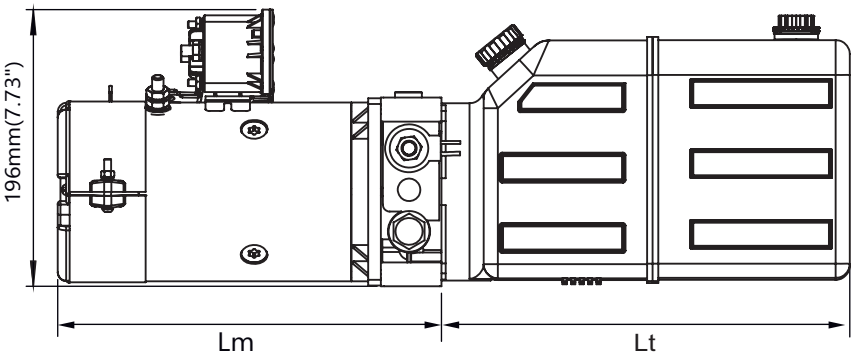
DP13C06-5 with 5" DC Motor

Outline Diemnsions



	DP13M06-530A	DP13M06-530B
Dim "Lm"	11.04" (280mm)	11.04" (280mm)
Rated Power	3.0kW, 12V	3.0kW, 24V

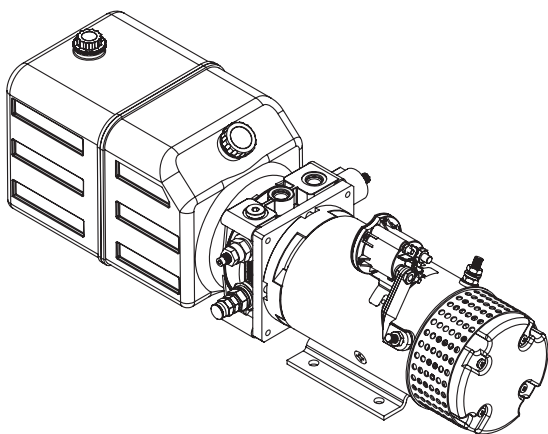
RP tank showed in following drawings. The dimension "Lt" of RP tank or other optional tanks, please refer to Page N1-1.



Bottom Mounting Hole

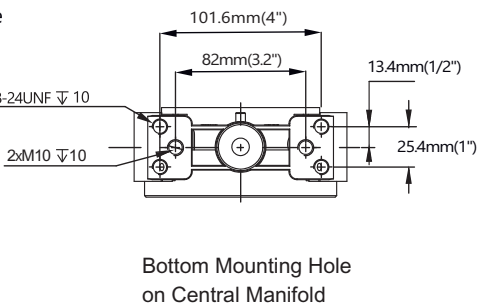
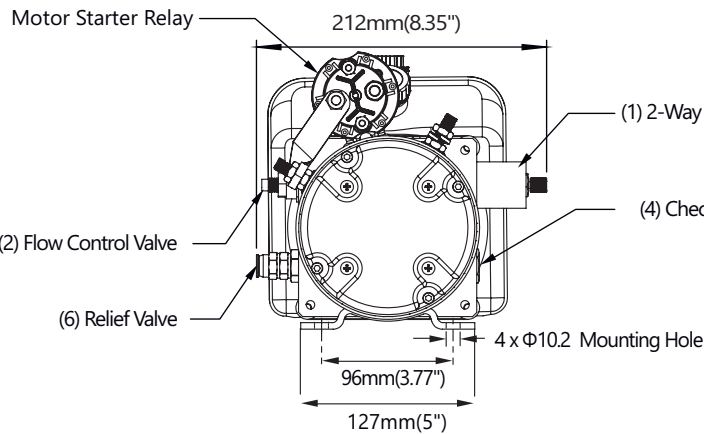
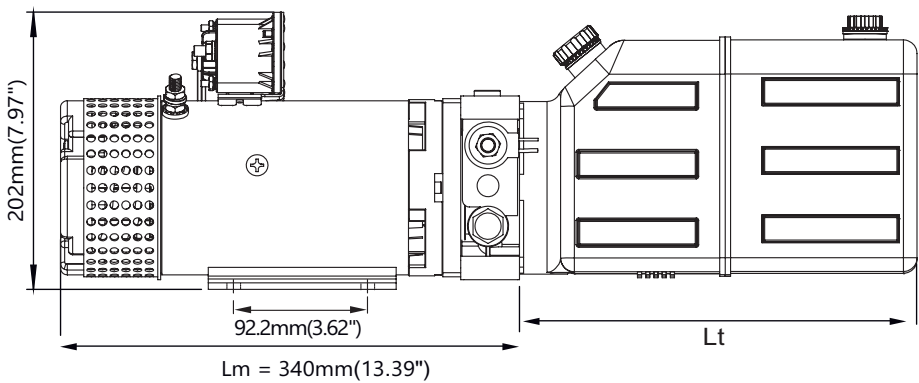
DP13C06-5 with 5" DC Motor

Outline Diemnsions



DP13M06-540B	
Dim "Lm"	13.39" (340mm)
Rated Power	4.0kW, 24V

RP tank showed in following drawings. The dimension "Lt" of RP tank or other optional tanks, please refer to Page N1-1.



With Stackable Cetop (D03) Directional Valve

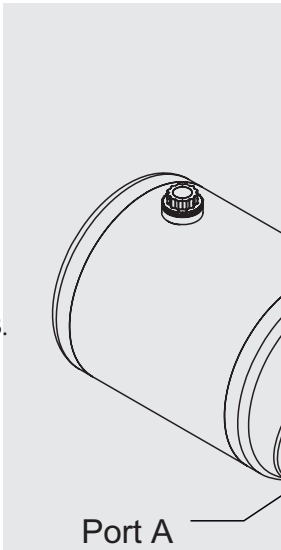
DP13

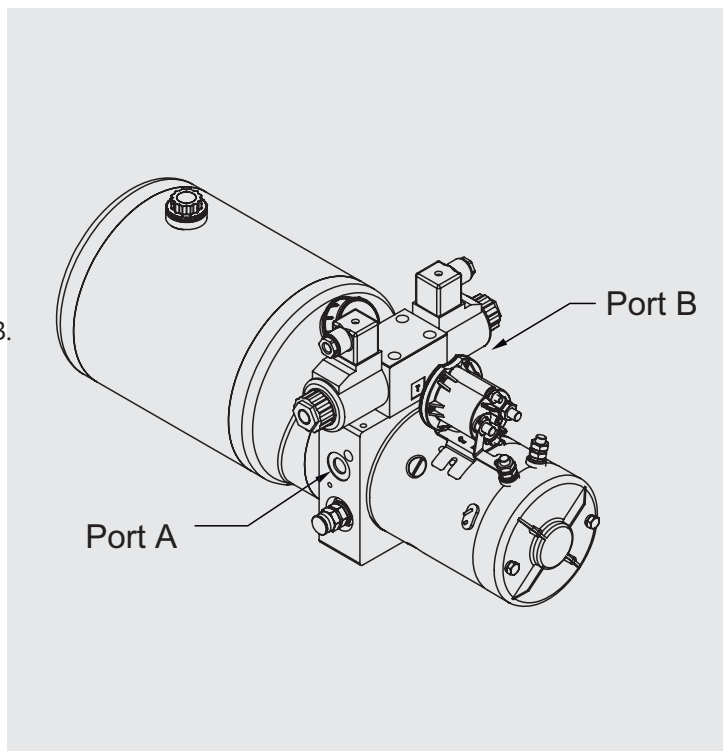
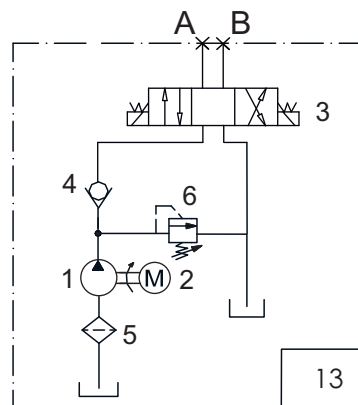
Series

DC
Hydraulic Power Unit

DP13M13

Group16D/22D/25D/28D/30D/40D (1.6kW to 4KW)

- Driving double acting hydraulic cylinder extending and retracting.
 - Choose the appropriate power and pump size according to the load of your application. Please refer to Page A1-1 or consult us.
 - Options for 3W4P directional valve(3), more details refer to page DD.
 1. Solenoid Valve.
 2. Solenoid Valve with Manual Override
 - Duty cycle is generally S2-1 minute, S3 - 15%.
It may be varies with loads , please consult us.
 - Port A and B, standard options:
 1. G3/8 (BSPP 3/8")
 2. SAE#6(9/16-18UNF),
 3. M14To custom-built other port size, please consult us.
 - Optional Tanks:
Series RP, LS, LT, MS, MT, details refer to page BB.
 - Controller Options:
 - 1) KCB22, the basic remote control handset.
 - 2) WRB22, economy wireless remote.More details please refer to N2-1
 - Popular Applications:
Material Handling forklift, dumper, dump trailer.
Mobile Home (RV), etc..
- 



Function Type 13 - Double Acting

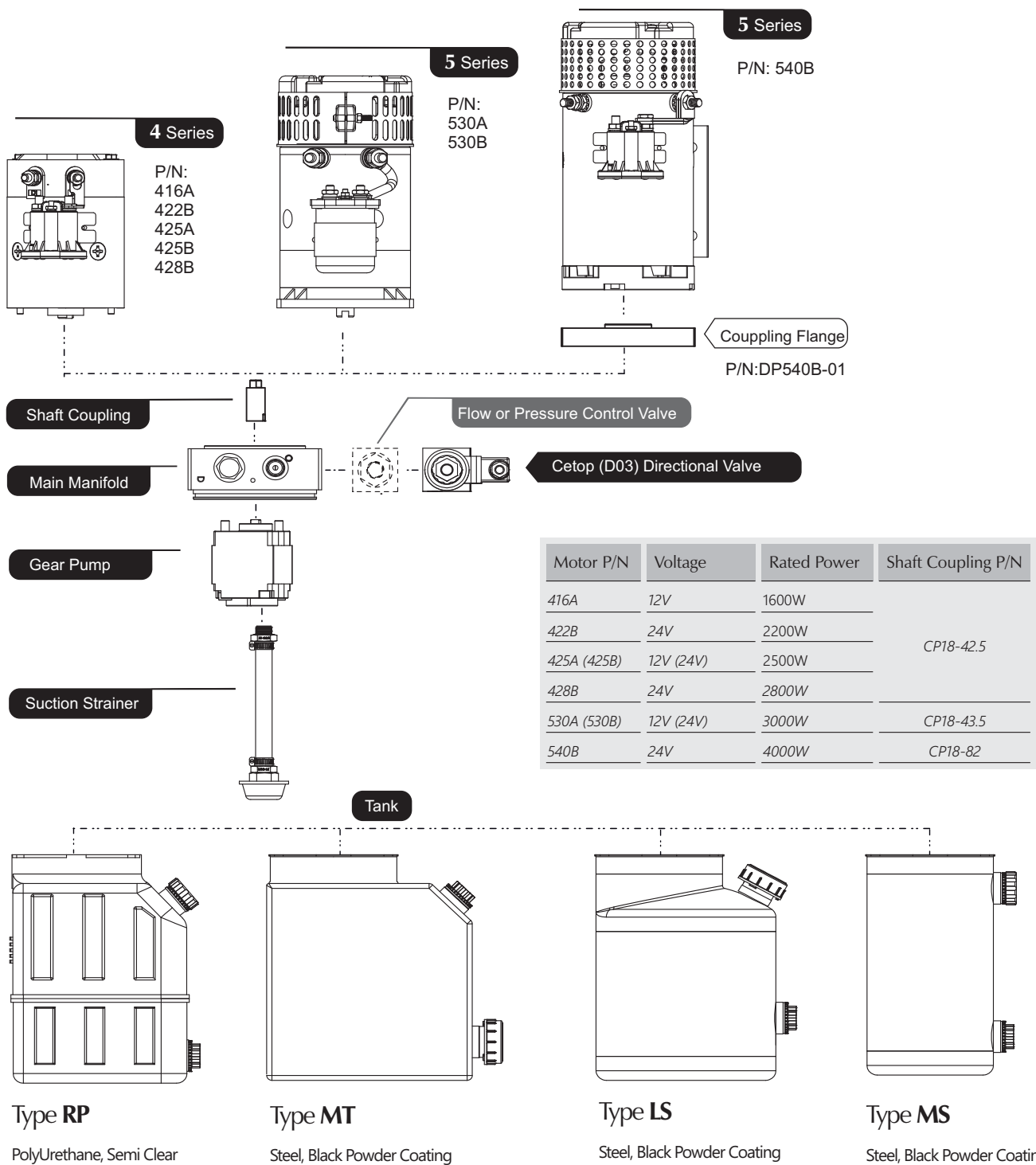
With Stackable Cetop (D03) Directional Valve

DP13
Series

DC
Hydraulic Power Unit

DP13M13

DC Motor :	4" Series, 5" Series
Main Manifold	UD021 (Machined Aluminum Manifold)
Gear Pump	G Series (Details refer to page G1-1)
Tank	Type RP, LS, LT, MS, MT, MR (Details refer to page N1)



Function Type 13 - Double Acting

With Stackable Cetop (D03) Directional Valve

DP13
Series

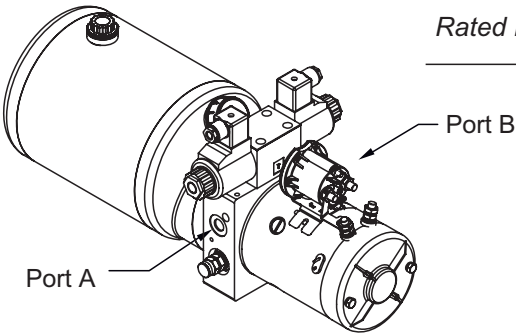
DC
Hydraulic Power Unit

DP13M13-4
with 4" DC Motor

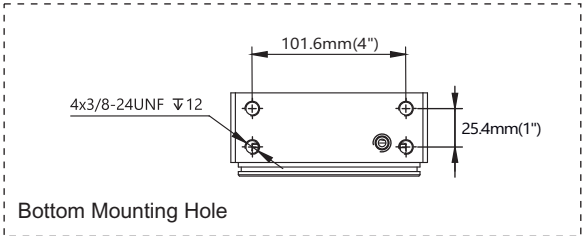
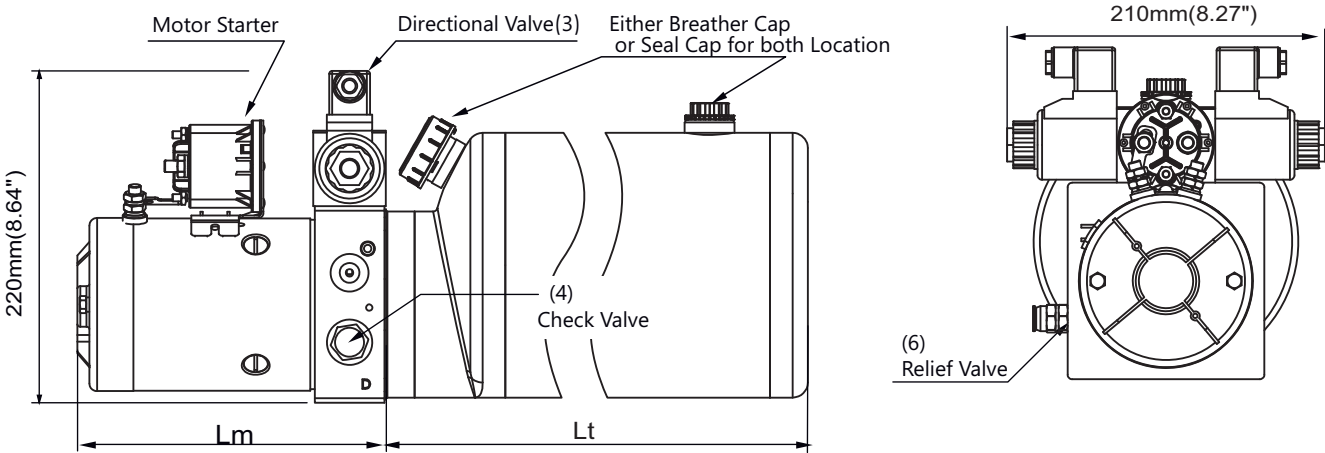
Outline Diemnsions

Group 16D/22D/25D/28D

	DP13M06-4 16	DP13M06-4 22	DP13M06-4 25	DP13M06-4 28
Dim "Lm"	8" 203mm	8" 203mm	8.78" 223mm	9.85" 250mm
Rated Power	1.6kW (12V)	2.2kW (24V)	2.5kW (12&24V)	2.8kw (24V)



LS type tank showed in following drawings. The dimension "Lt" of RP tank or other optional tanks, please refer to Page N1-1.



Function Type 13 - Double Acting

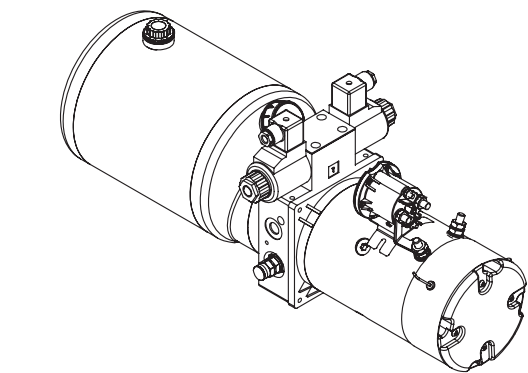
With Stackable Cetop (D03) Directional Valve

DP13
Series

DC
Hydraulic Power Unit

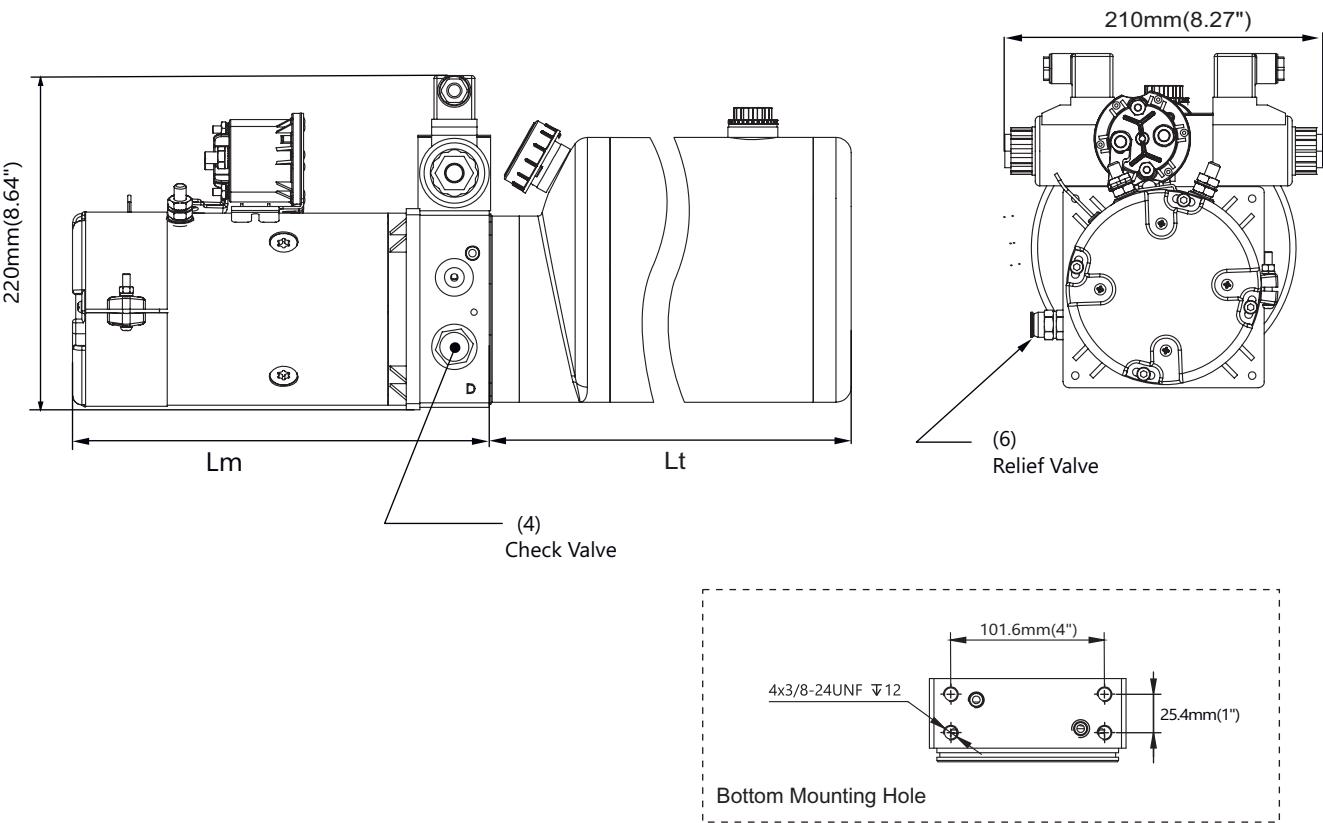
DP13M13-530
with 5" DC Motor

Outline Diemnsions



	DP13C13-530A	DP13C13-530B
Dim "Lm"	11.04" (280mm)	11.04 (280mm)
Rated Power	3.0kW, 12V	3.0kW, 24V

LS type tank showed in following drawings. The dimension "Lt" of LS tank or other optional tanks, please refer to Page N1-1.



Function Type 13 - Double Acting

With Stackable Cetop (D03) Directional Valve

DP13

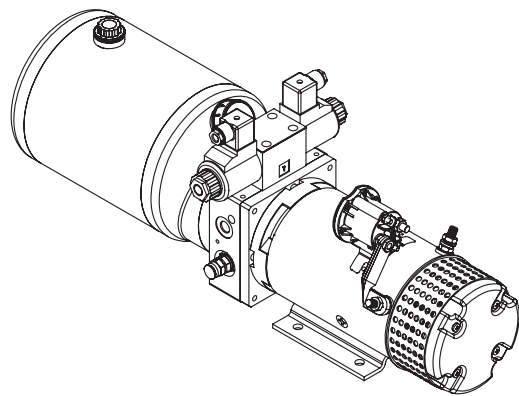
Series

DC

Hydraulic Power Unit

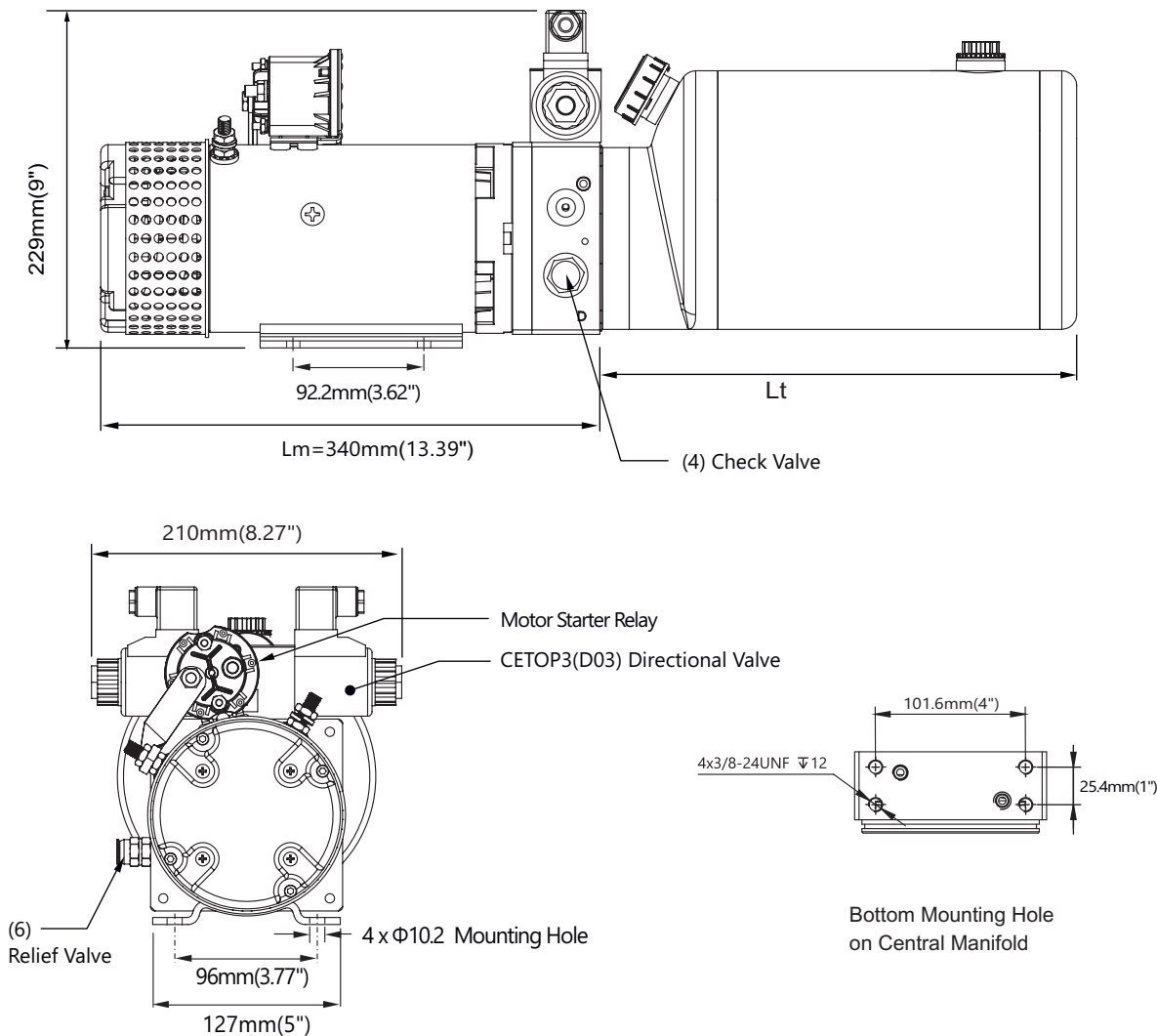
DP13M13-540 with 5" DC Motor

Outline Diemnsions



	DP13C13-540B
Dim "Lm"	13.39" (340mm)
Rated Power	4.0kW, 24V

LS type tank showed in following drawings. The dimension "Lt" of LS tank or other optional tanks, please refer to Page N1-1.



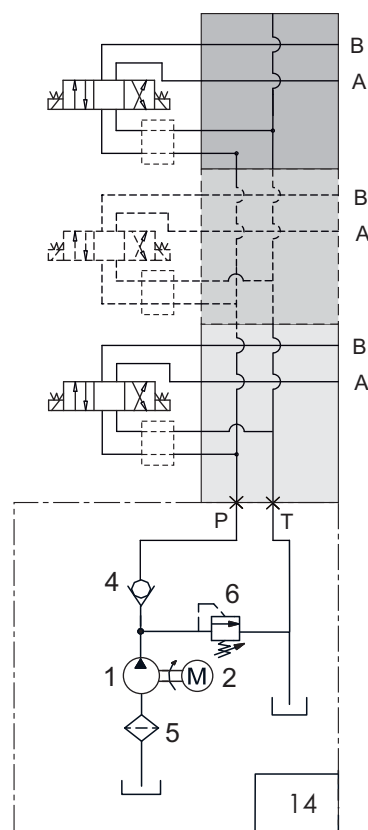
DP13V14 & DP13H14

Group 16D/22D/25D/28D/30D/40D (1.6kW to 4KW)

- Driving double acting hydraulic cylinder extending and retracting.
 - Choose the appropriate power and pump size according to the load of your application. Please refer to Page A1-1 or consult us.
 - Options for 3W4P directional valve(3), more details refer to page DD.
 1. Solenoid Valve.
 2. Solenoid Valve with Manual Override
 - Duty cycle is generally S2-1 minute, S3 - 15%.
It may be varies with loads , please consult us.
 - Port A and B, standard options:
 1. G3/8 (BSPP 3/8")
 2. SAE#6(9/16-18UNF),
 3. M14
 To custom-built other port size, please consult us.
 - Optional Tanks:

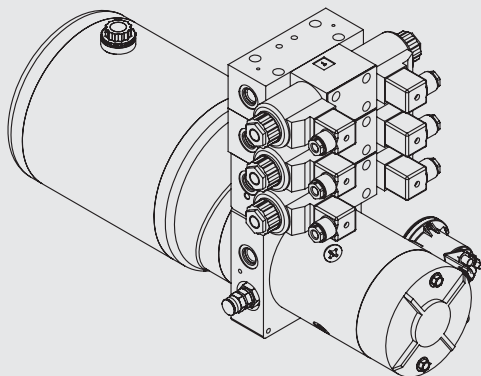
Series RP, LS, LT, MS, MT, details refer to page BB.
 - Controller Options:
 - 1) KCB Series, the basic remote control handset, able to control 3 paths.
 - 2) WRV Series, industrial grade wireless remote, able to control 3 paths max.
- More details please refer to N2-1

Expandable Circuit Design

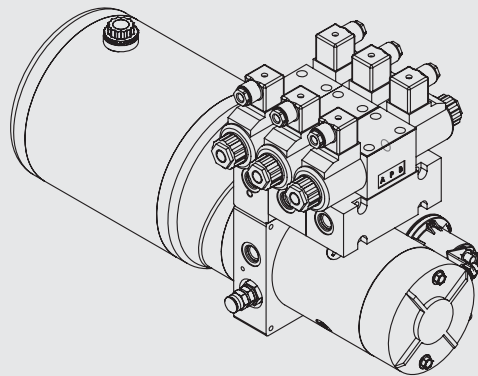


*2 Valves (paths) min, expandable up to 5 Valves (paths).

DP13V14
Vertical Stacking



DP13H14
Horizontal Stacking



Function Type 14 - Double Acting

Expandable Circuit with Cetop3 (D03) Directional Valve

DP13

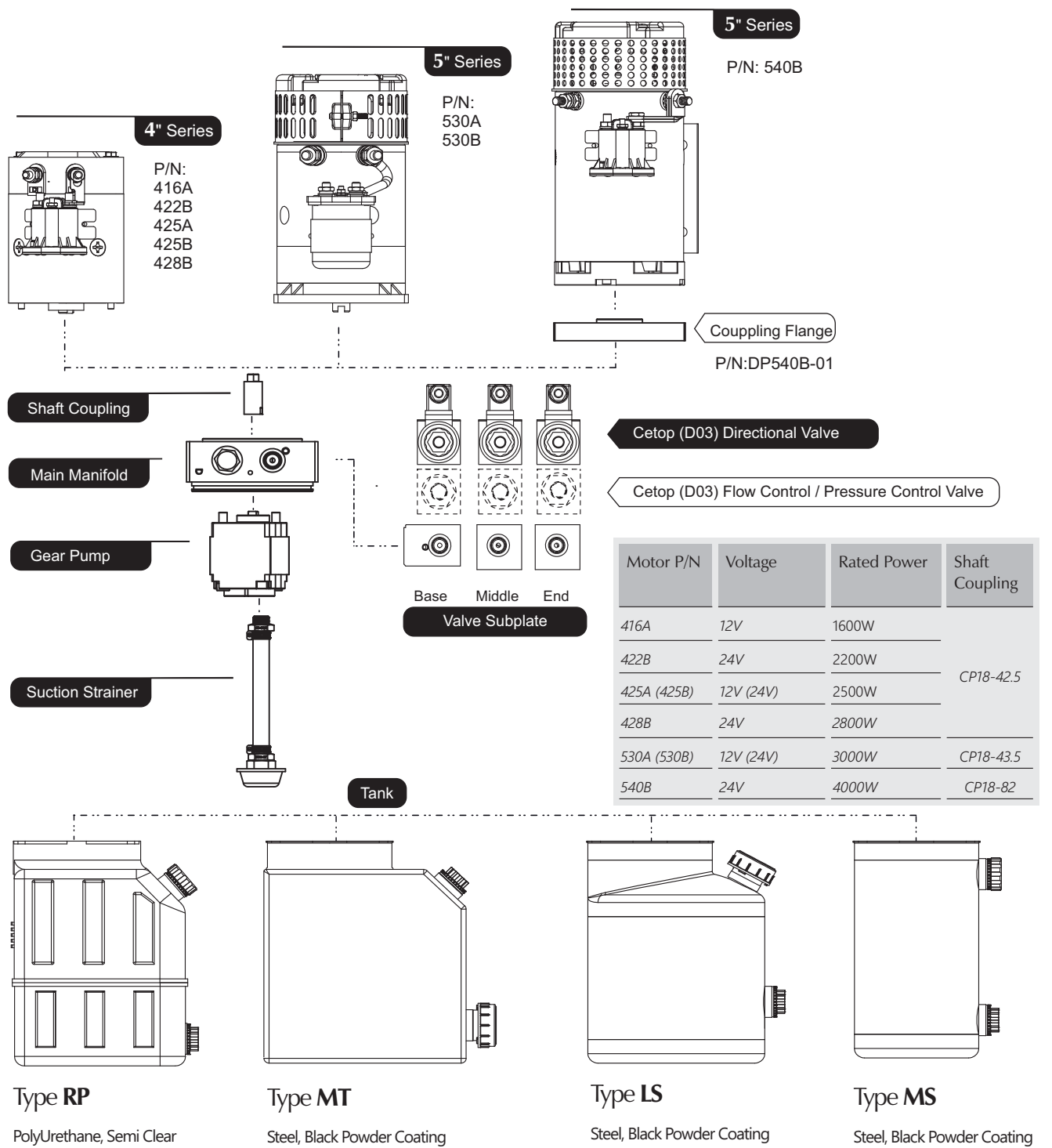
Series

DC

Hydraulic Power Unit

DP13V14 & DP13H14

DC Motor	4 Series, 5 Series,(1.6kw-4kw)
Main Manifold	UD013A (Machined Aluminum Manifold)
Gear Pump	G Series (Details refer to page G1-1)
Tank	Type RP, LS, LT, MS, MT, MR (Details refer to page N1)



Function Type 14 - Double Acting
Expandable Circuit with Cetop3 (D03) Directional Valve

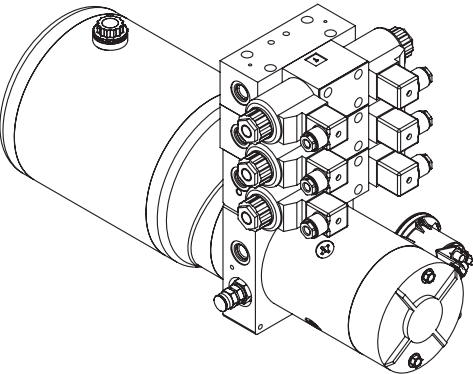
DP13

Series

DC

Hydraulic Power Unit

Vertical Stacking



DP13V14-4

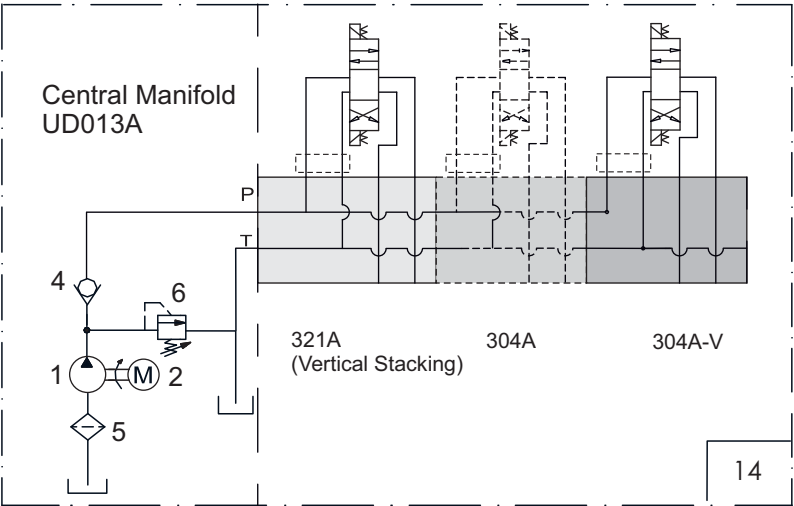
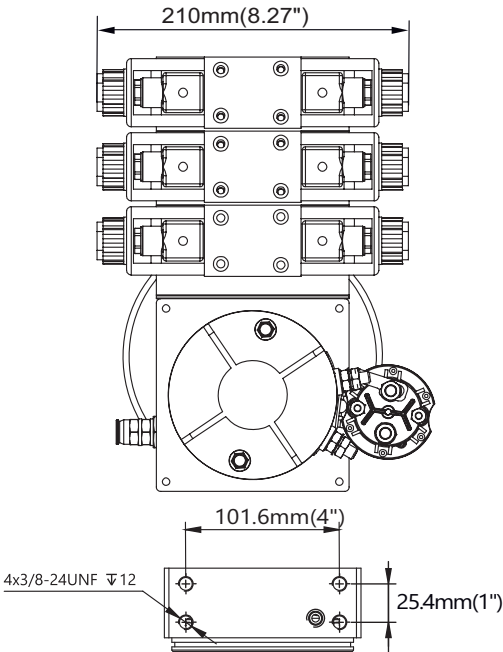
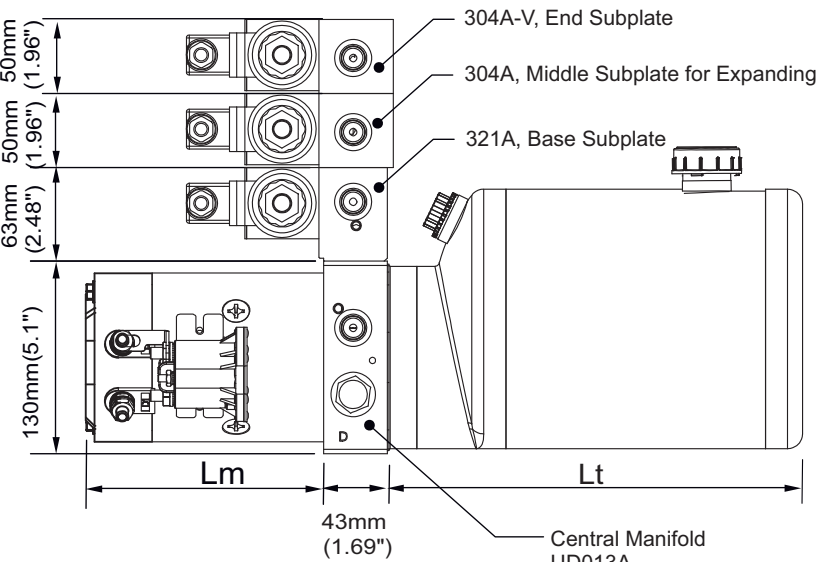
With 4" DC Motor

Outline Diemnsions

Group 16D/22D/25D/28D

	DP13V14-416	DP13V14-422	DP13V14-425	DP13V14-428
Dim "Lm"	8" (203mm)	8" (203mm)	8.78" (223mm)	9.85" (250mm)
Rated Power	1.6kW (12V)	2.2kW (24V)	2.5kW (12&24V)	2.8kw (24V)

LS type tank showed in following drawings. The dimension "Lt" of LS tank or other optional tanks, please refer to Page N1-1.



Function Type 14 - Double Acting

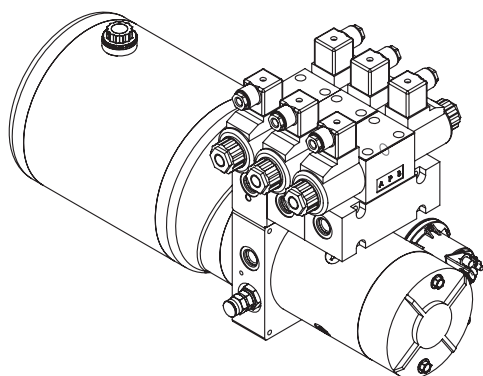
Expandable Circuit with Cetop3 (D03) Directional Valve

DP13

Series

DC
Hydraulic Power Unit

Horizontal Stacking



DP13H14-4

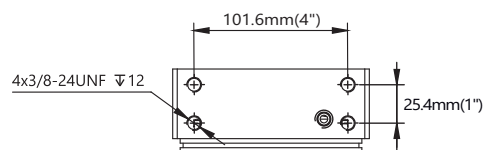
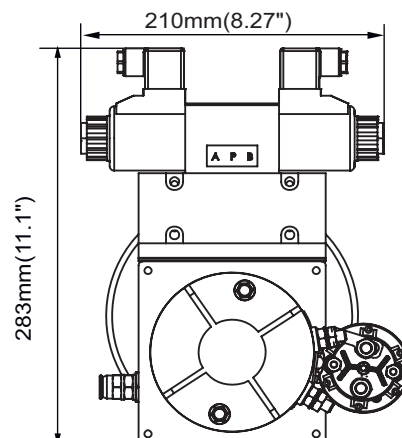
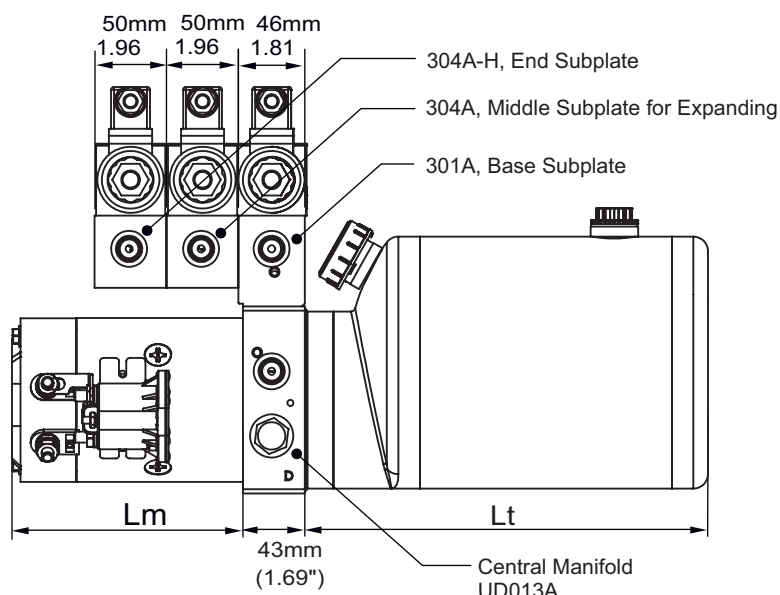
With 4" DC Motor

Outline Dimensions

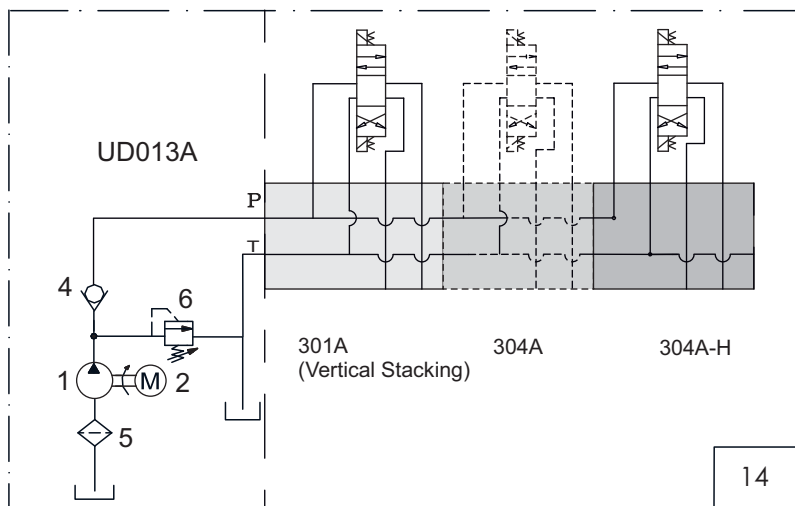
Group 16D/22D/25D/28D

	DP13H14-416	DP13H14-422	DP13H14-425	DP13H14-428
Dim "Lm"	8" (203mm)	8" (203mm)	8.78" (223mm)	9.85" (250mm)
Rated Power	1.6kW (12V)	2.2kW (24V)	2.5kW (12&24V)	2.8kW (24V)

LS type tank showed in following drawings. The dimension "Lt" of LS tank or other optional tanks, please refer to Page N1-1.



Bottom Mounting Hole



Vertical Stacking

DP13V14-5
With 5" DC Motor

Outline Diemnsions
Group 30D/40D

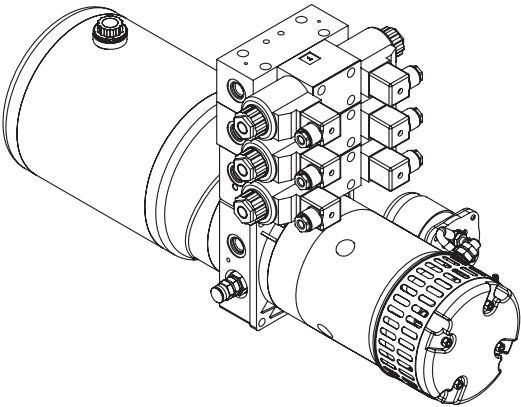
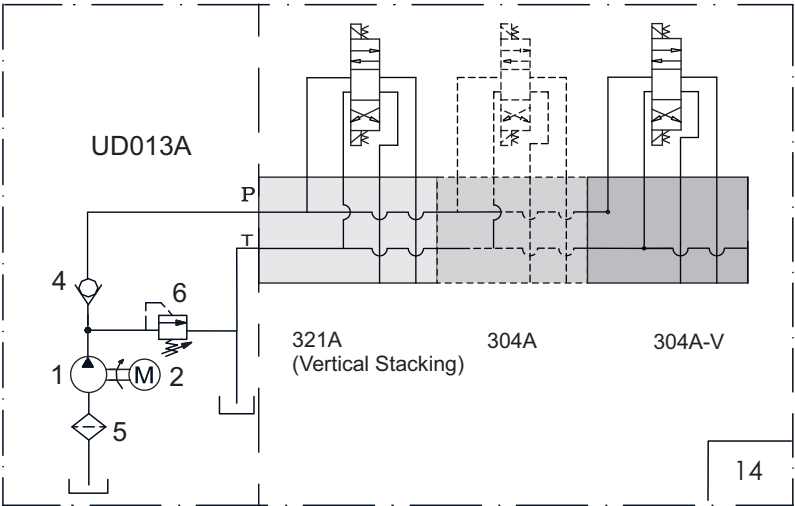
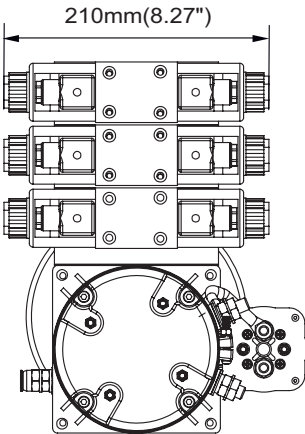
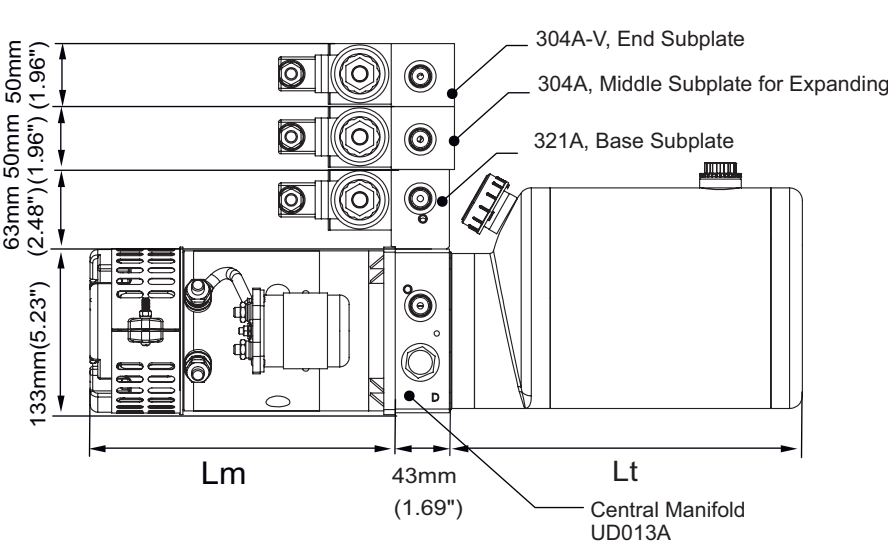


Table with 3 columns: Component, DP13V14-530, DP13V14-540. Rows include Dim "Lm" and Rated Power.

LS type tank showed in following drawings. The dimension "Lt" of LS tank or other optional tanks, please refer to Page N1-1.



Horizontal Stacking

DP13H14-5
With 5" DC Motor

Outline Diemnsions
Group 30D/40D

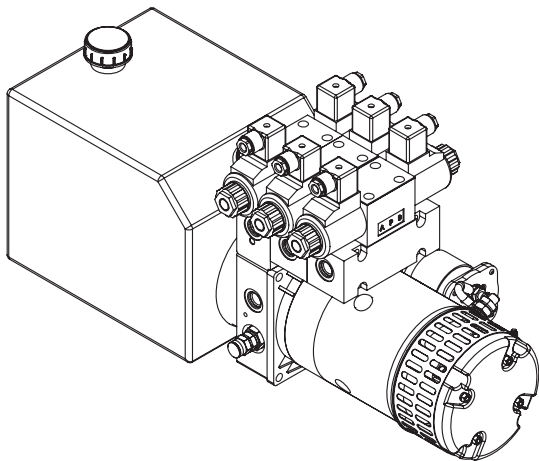
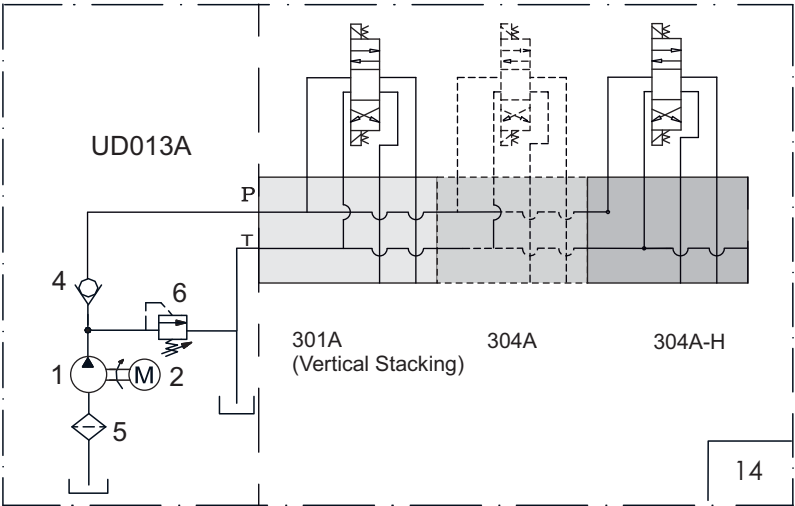
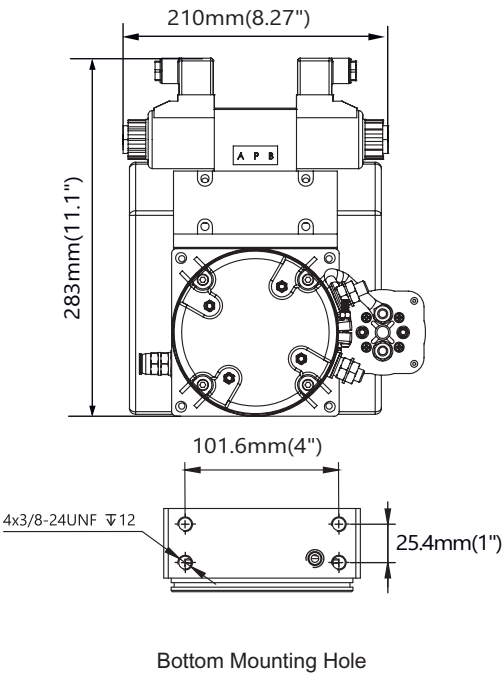
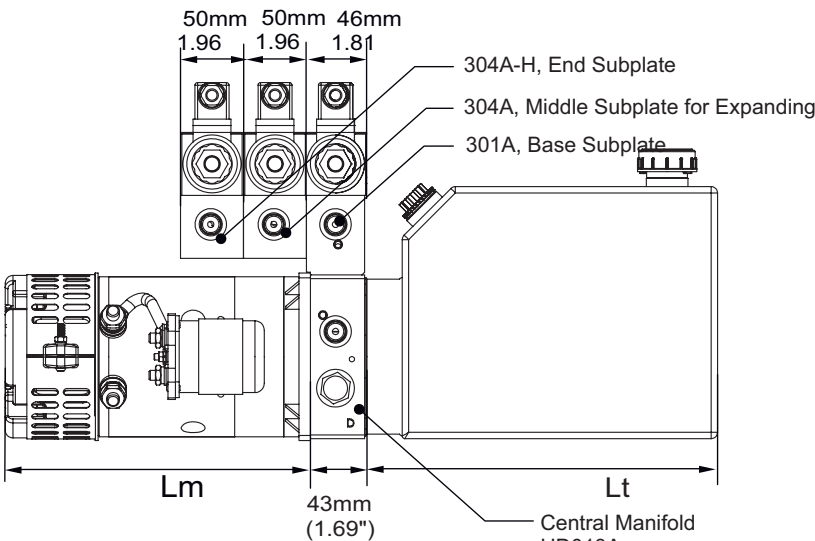


Table with 3 columns: Component, DP13H14-530, DP13H14-540. Rows include Dim "Lm" and Rated Power.

LS type tank showed in following drawings. The dimension "Lt" of LS tank or other optional tanks, please refer to Page N1-1.

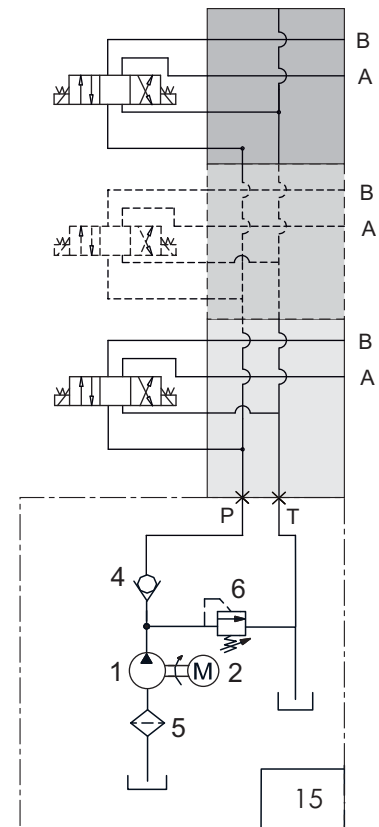


DP13H15

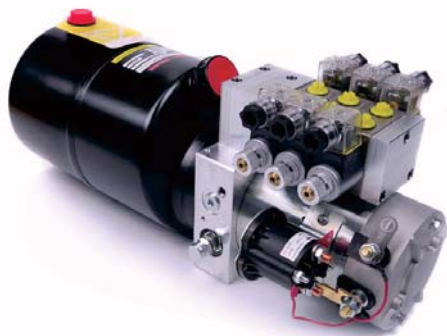
Group 16D/22D/25D/28D/30D/40D (1.6kW to 4KW)

Expandable Circuit Design

- Driving multi double acting hydraulic cylinders extending and retracting.
- Choose the appropriate power and pump size according to the load of your application. Please refer to Page A1-1 or consult us.
- Options for 3W4P directional valve(3), more details refer to page DD.
 1. Solenoid Directional Valve.
 2. Solenoid Directional Valve with Manual Override
- Duty cycle is generally S2-1 minute, S3 - 15%.
 It may be varies with loads , please consult us.
- Port A and B, standard options:
 1. G3/8 (BSPP 3/8")
 2. SAE#6(9/16-18UNF),
 3. M14
 To custom-built other port size, please consult us.
- Optional Tanks:
 Series RP, LS, LT, MS, MT, details refer to page BB.
- Controller Options:
 - 1) KCB Series, the basic remote control handset, able to control 5 paths.
 - 2) WRV Series, industrial grade wireless remote, able to control 3 paths max.
 More details please refer to N2-1



*1 Valves (paths) min, expandable up to 5 Sectional Valves.



Hydraulic Power Unit



Hydraulic Power Unit with Wireless Remote

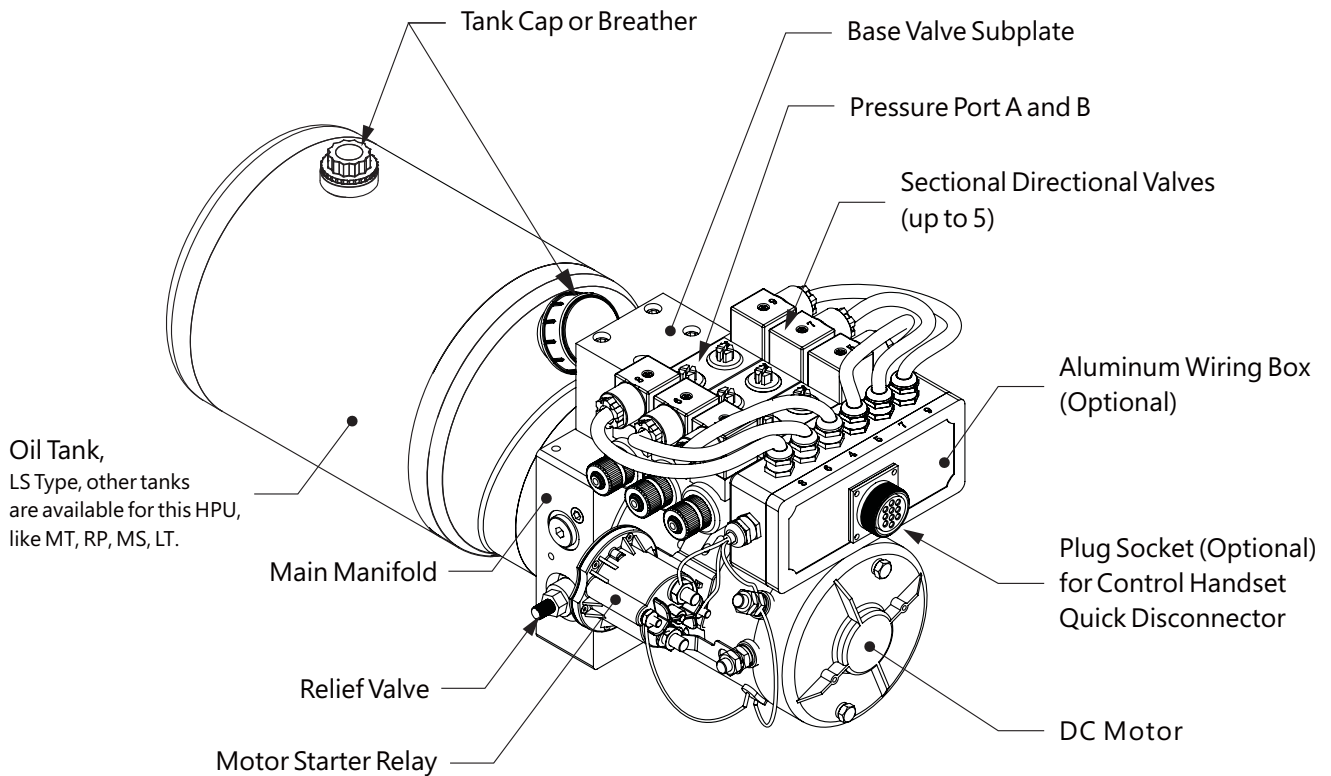
Function Type 15 - Double Acting

Expandable Circuit with Sectional Directional Valve

DP13

Series

DC
Hydraulic Power Unit



DP13 H 15 Y 3 - 4 16 A - RP1 - 01

(1) (2) (3) (4) (5) (6) (7) (8) (9) (10)

- (1) DP13 Series - DC Hydraulic Power Unit
- (2) Style of Directional Valve Stacking: V - Vertical Mounting, H - Horizontal Mounting
- (3) Function Type (Hydraulic Circuit): 14 - Expandable Double Acting Circuit, with Cetop3 (D03) 3/4 Directional Valve.
15 - Expandable Double Acting Circuit, with Sectional 3/4 Directional Valve.
- (4) Function Code of 3/4 Directional Valve
- (5) Number of Directional Valves Installed
- (6) Motor Size : 3- 3" Motor, 4- 4" Motor, 5 -5" Motor
- (7) Rated Power of DC Motor:
 - 3" DC Motor : 01 - 150W, 03 - 350W, 05 - 500W, 08 - 800W
 - 4" DC Motor : 16 - 1.6kW, 22 - 2.2kW, 25 - 2.5kW, 28 - 2.8kW
 - 5" DC Motor : 30 - 3.0Kw, 40 - 4.0kW
- (8) Voltage of DC Motor
- (9) Code of Oil Tank
- (10) Design Number, specified by Mocen.

Function Type 15 - Double Acting

Expandable Circuit with Sectional Directional Valve

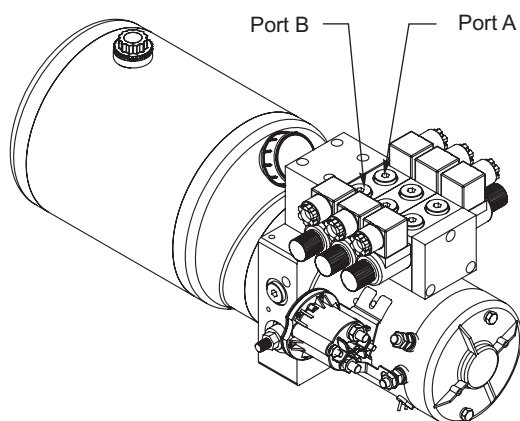
DP13 Series

DC
Hydraulic Power Unit

DP13H15-4 with 4" DC Motor

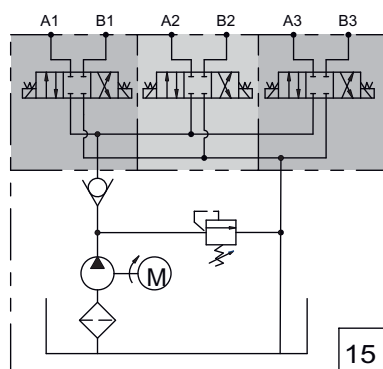
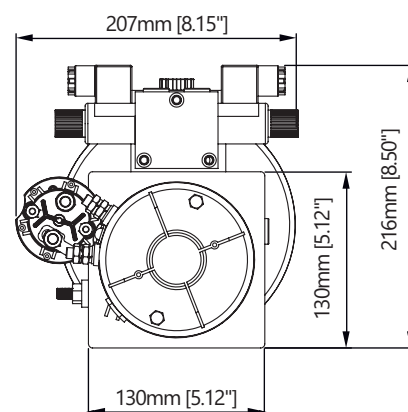
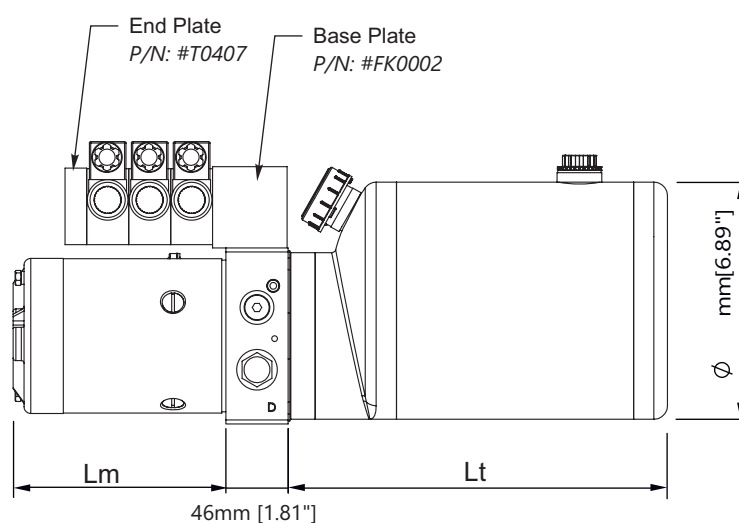
Outline Dimensions

Group 16D/22D/25D/28D

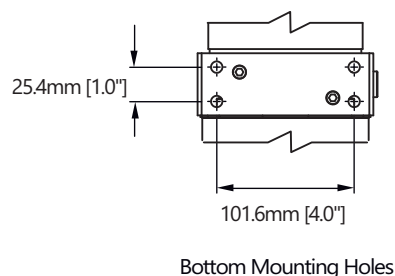


	DP13H14 -416	DP13H14 -422	DP13H14 -425	DP13H14 -428
Dim "Lm"	8" (203mm)	8" (203mm)	8.78" (223mm)	9.85" (250mm)
Rated Power	1.6kW (12V)	2.2kW (24V)	2.5kW (12&24V)	2.8kw (24V)

LS type tank showed in following drawings. The dimension "Lt" of LS tank or other optional tanks, please refer to Page N1-1.



Expandable, up to 5 sections



* More details about options on directional valve, please refer to the part of Sectional Directional Valves on Page L-01

Function Type 15 - Double Acting

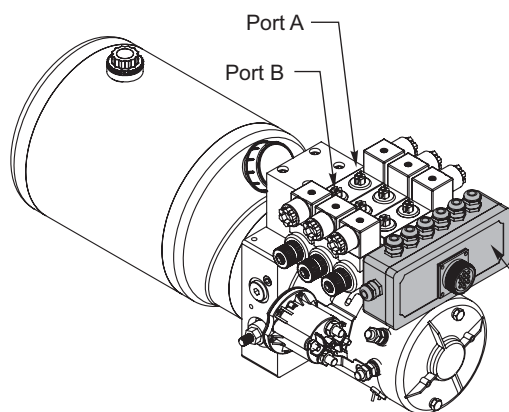
Expandable Circuit with Sectional Directional Valve

DP13

Series

DC
Hydraulic Power Unit

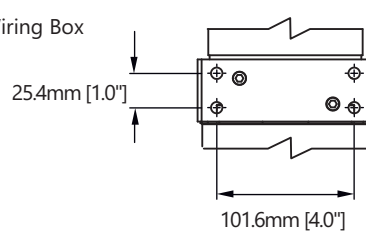
DP13H15-4 With 4" DC Motor



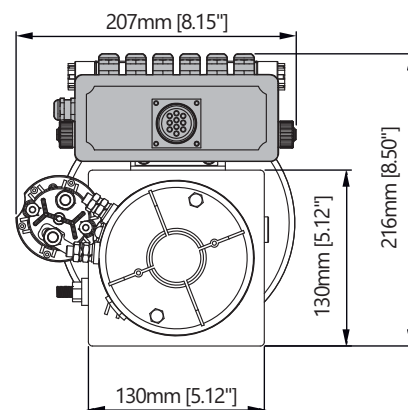
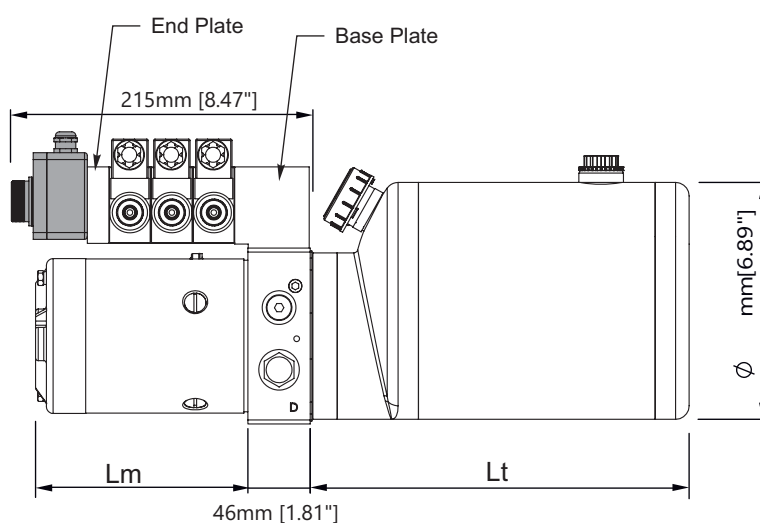
Dimensions with Optional Wiring Box Mounted

* More details about wireless remote, please refer to Page V-08

Aluminum Wiring Box
(Optional)



Bottom Mounting Holes



Function Type 15 - Double Acting

Expandable Circuit with Sectional Directional Valve

DP13

Series

DC

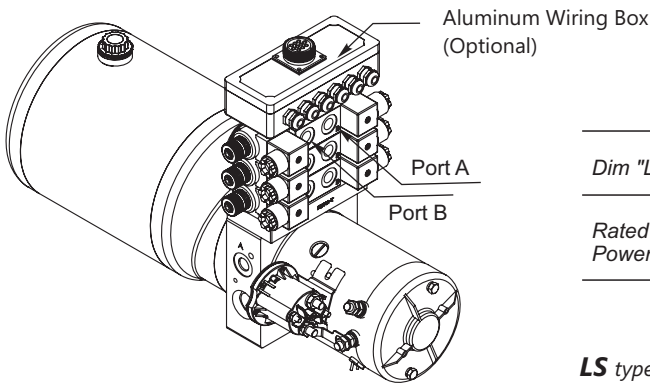
Hydraulic Power Unit

DP13V15-4

With 4" DC motor

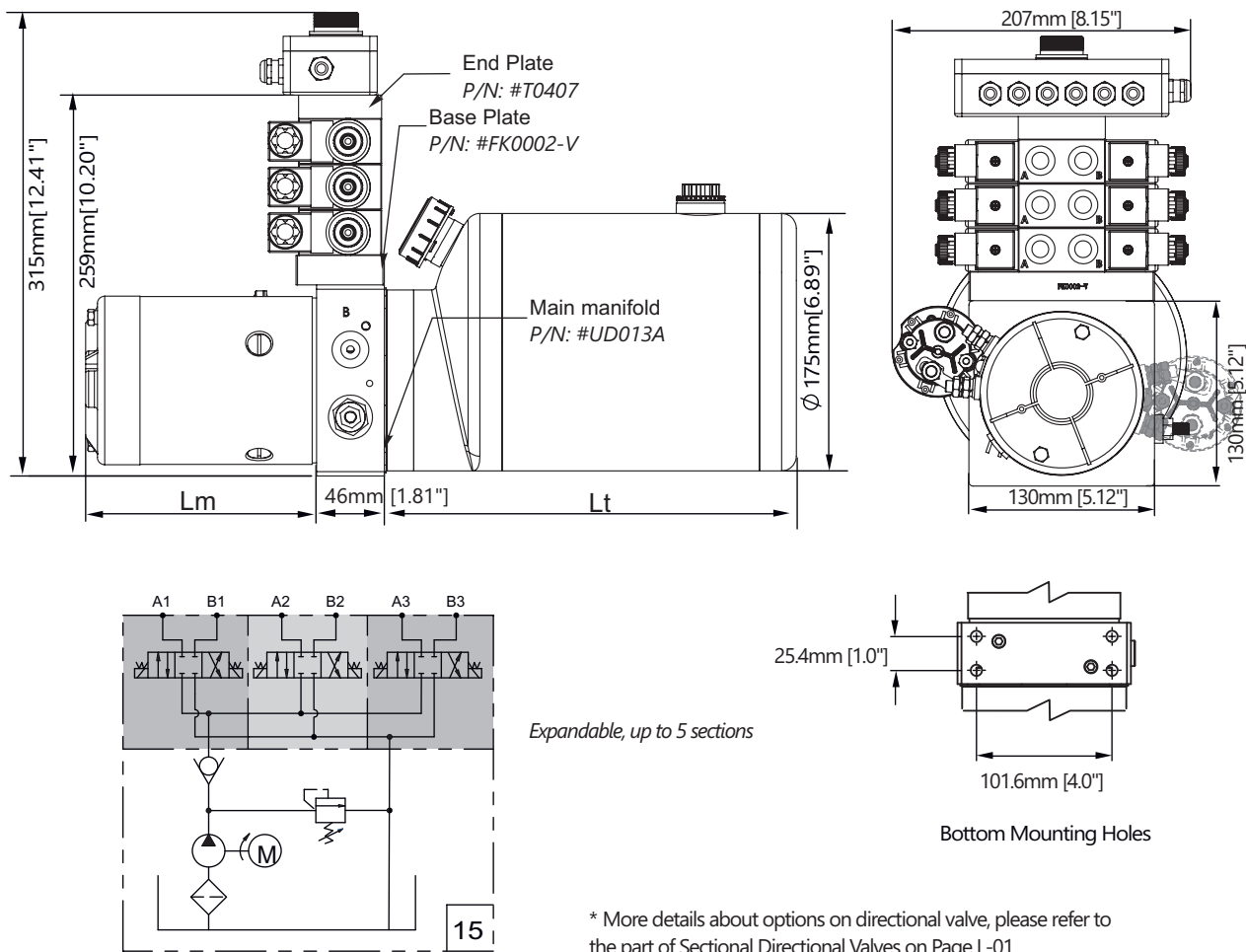
Outline Diemnsions

Group 16D/22D/25D/28D



	DP13H14 -416	DP13H14 -422	DP13H14 -425	DP13H14 -428
Dim "Lm"	8" (203mm)	8" (203mm)	8.78" (223mm)	9.85" (250mm)
Rated Power	1.6kW (12V)	2.2kW (24V)	2.5kW (12&24V)	2.8kw (24V)

LS type tank showed in following drawings. The dimension "Lt" of LS tank or other optional tanks, please refer to Page N1-1.



* More details about options on directional valve, please refer to the part of Sectional Directional Valves on Page L-01

Function Type 15 - Double Acting
Expandable Circuit with Sectional Directional Valve

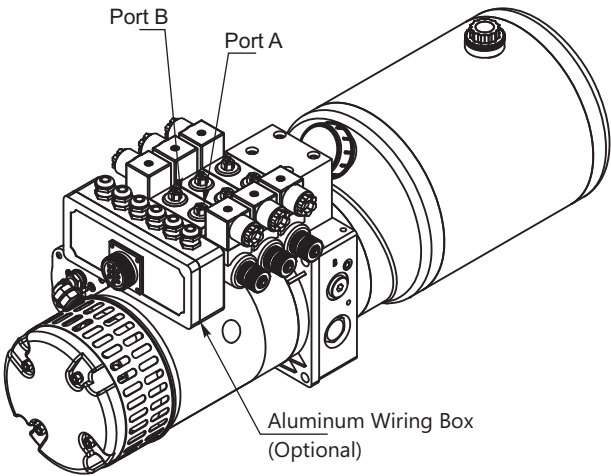
DP13

Series

DC

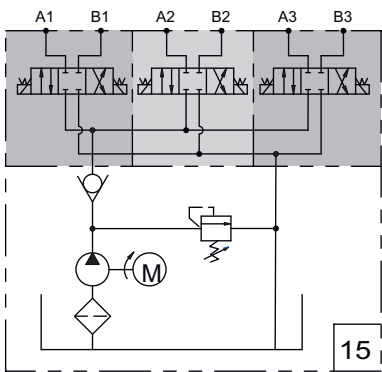
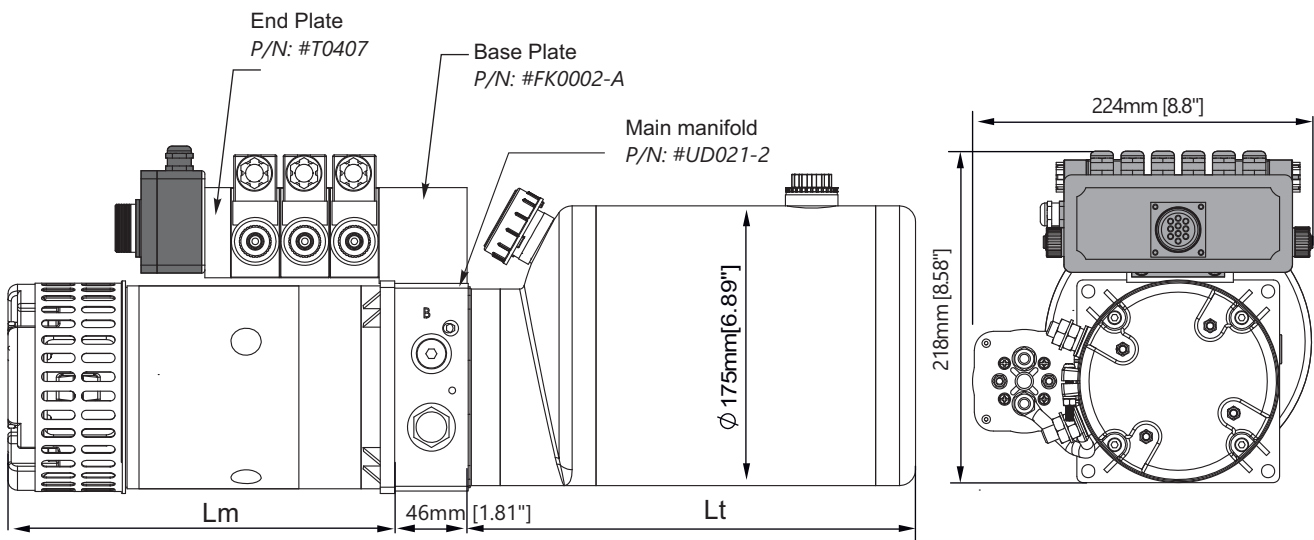
Hydraulic Power Unit

DP13H15-5 With 5" DC motor

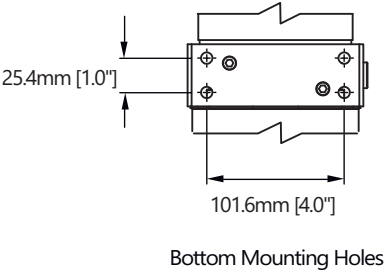


Outline Diemnsions
Group 30D/40D

	DP13H15-530	DP13H15-540
Dim "Lm"	11.04" (280mm)	13.39" (340mm)
Rated Power	3.0kW, 12V	3.0kW, 24V



Expandable, up to 5 sections



* More details about options on directional valve, please refer to the part of Sectional Directional Valves on Page L-01

Function Type 15 - Double Acting

Expandable Circuit with Sectional Directional Valve

DP13

Series

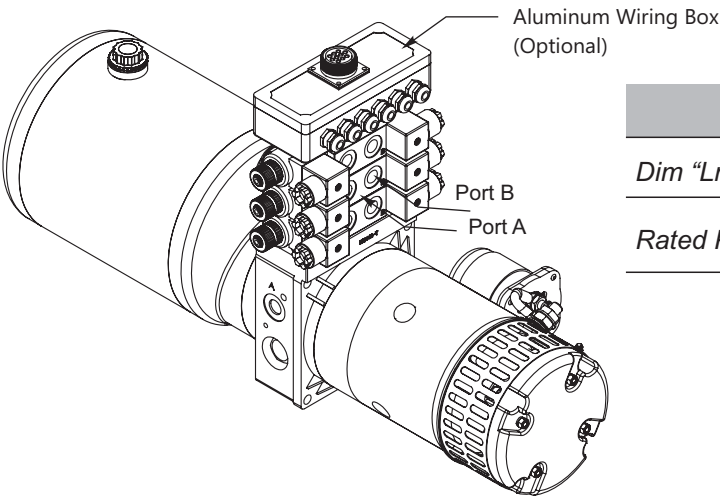
DC

Hydraulic Power Unit

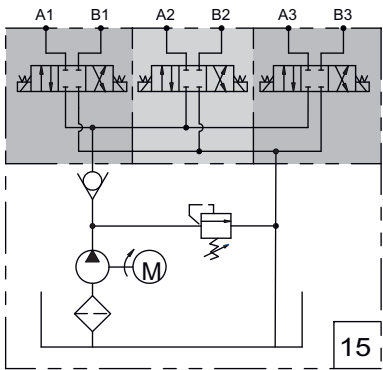
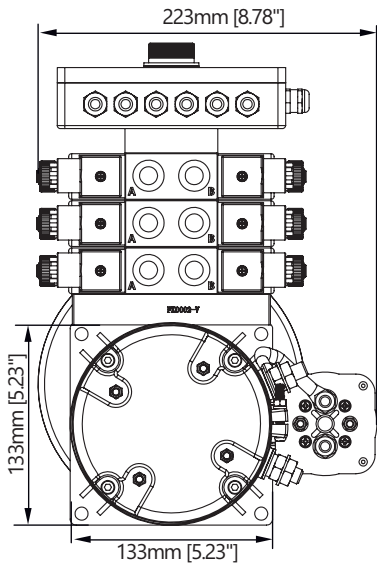
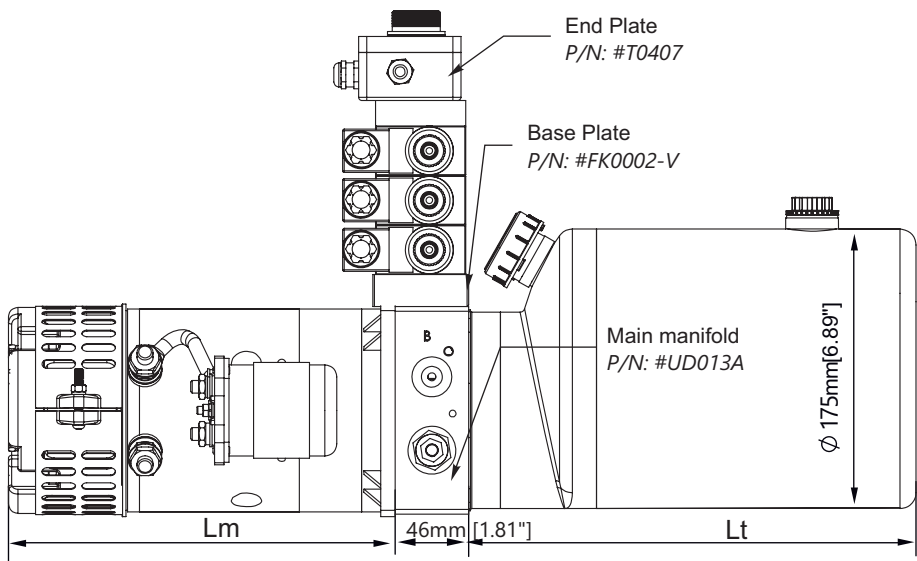
DP13V15-5 With 5" DC motor

Outline Diemnsions

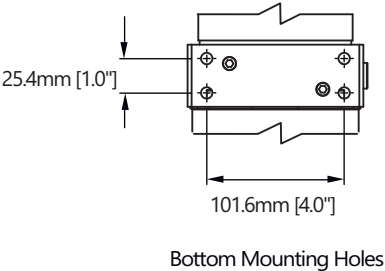
Group 30D/40D



	DP13H15-530	DP13H15-540
Dim "Lm"	11.04" (280mm)	13.39" (340mm)
Rated Power	3.0kW, 12V	3.0kW, 24V



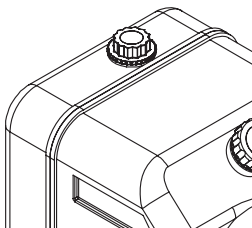
Expandable, up to 5 sections

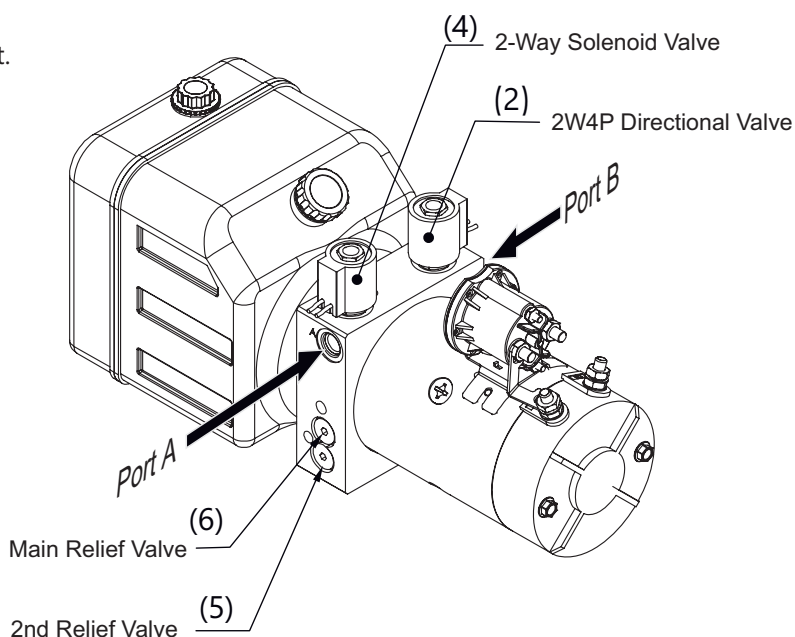
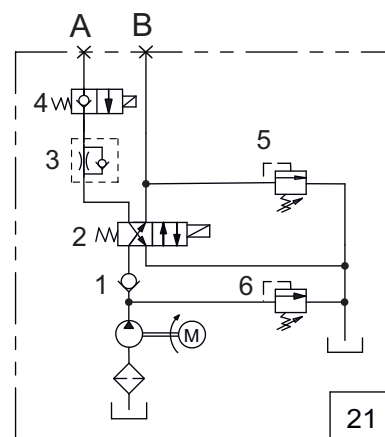


* More details about options on directional valve, please refer to the part of Sectional Directional Valves on Page L-01

DP13M21

Group 16D/22D/25D/28D/30D/40D (1.6kW to 4KW)

- Drive double acting cylinder extending and retracting.
 - Variety motor power generate different pressure and flow.
 - Optional Flow Control Valve (3).
Return flow at cylinder retracting can be restricted by a optional flow control valve (3) with reverse flow check. The orifice in this valve could be specified according to customer's specification.
 - 2-way Solenoid Valve (4).
You have two option on this 2-way solenoid valve :
 1. No Manual Override (Default)。
 2. With Manual Override。
 - Port Size: O-ring Boss SAE #6 (9/16-18UNF), on port A and B
Other port size upon customer's requirement.
 - Standard Duty Cycle is S1=1 minute, S2 15%.
Please consult us for Longer duty cycle.
 - Optional Tanks:
Series RP, LS, LT, MS, MT, details refer to page BB.
 - Controller Options:
 - 1) KCB22, the basic remote control handset.
 - 2) WRB22, economy wireless remote.More details please refer to N2-1
 - Popular Applications:
Dump Truck, Dump Trailer,
Mobile Home (RV), etc..
- 



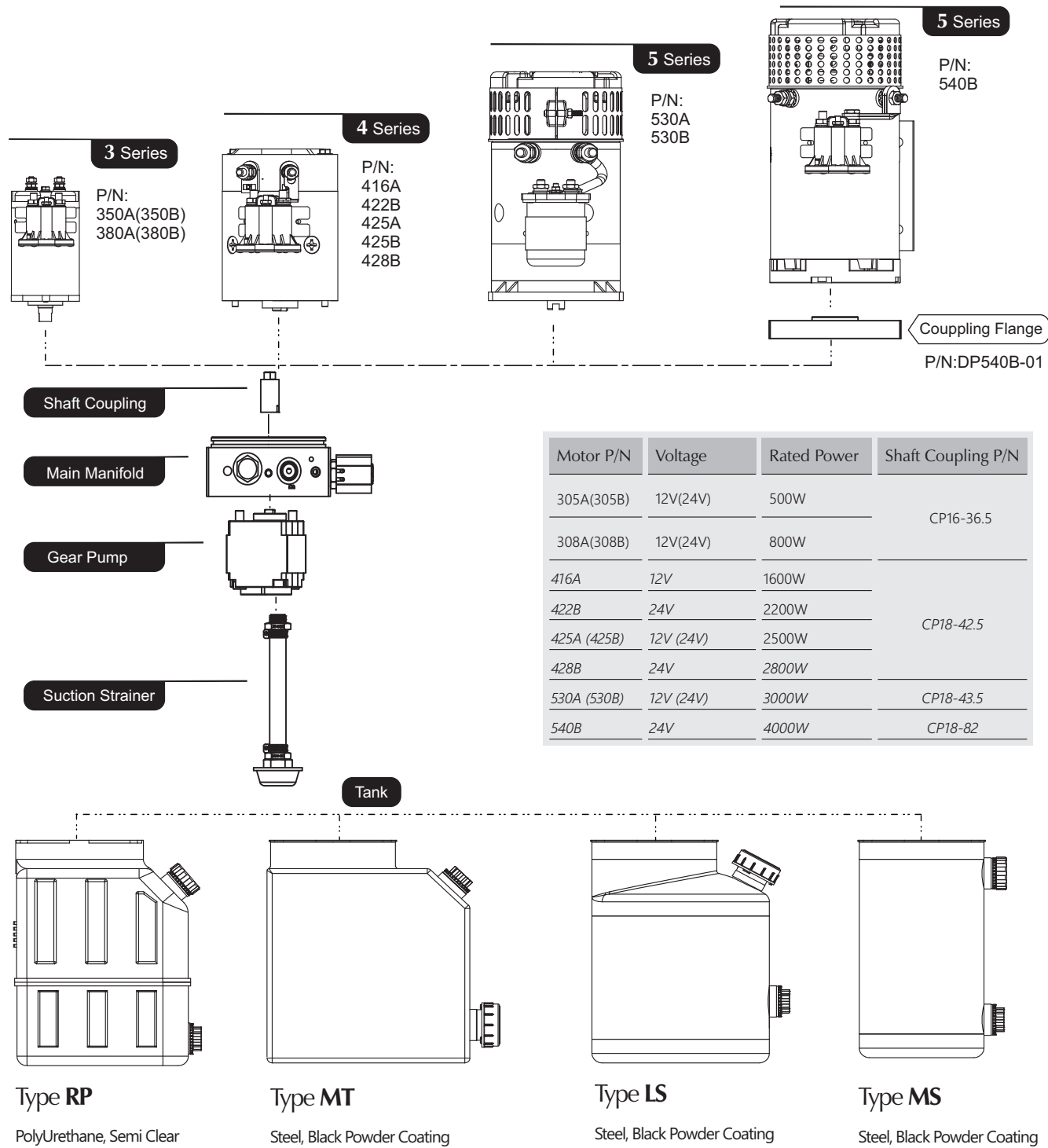
Function 21 - Double Acting

DP13
Series

DC
Hydraulic Power Unit

DP13M21

DC Motor	3 Series,4 Series,5 Series,(500w-4kw)
Main Manifold	UD21A-01 (Machined Aluminum Manifold)
Gear Pump	G Series (Details refer to page G1-1)
Tank	Type RP, LS, LT, MS, MT, MR (Details refer to page N1)

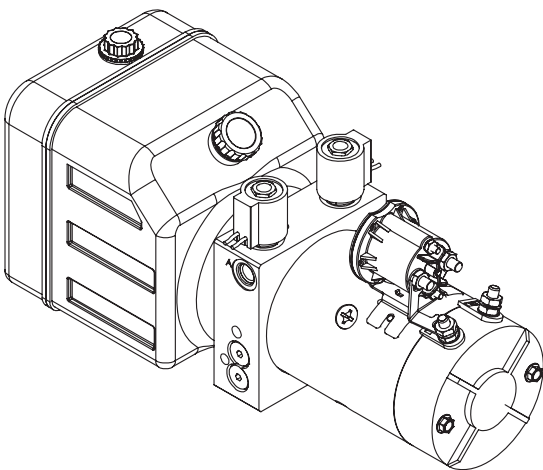


DP13M21-4

with 4" DC Motor

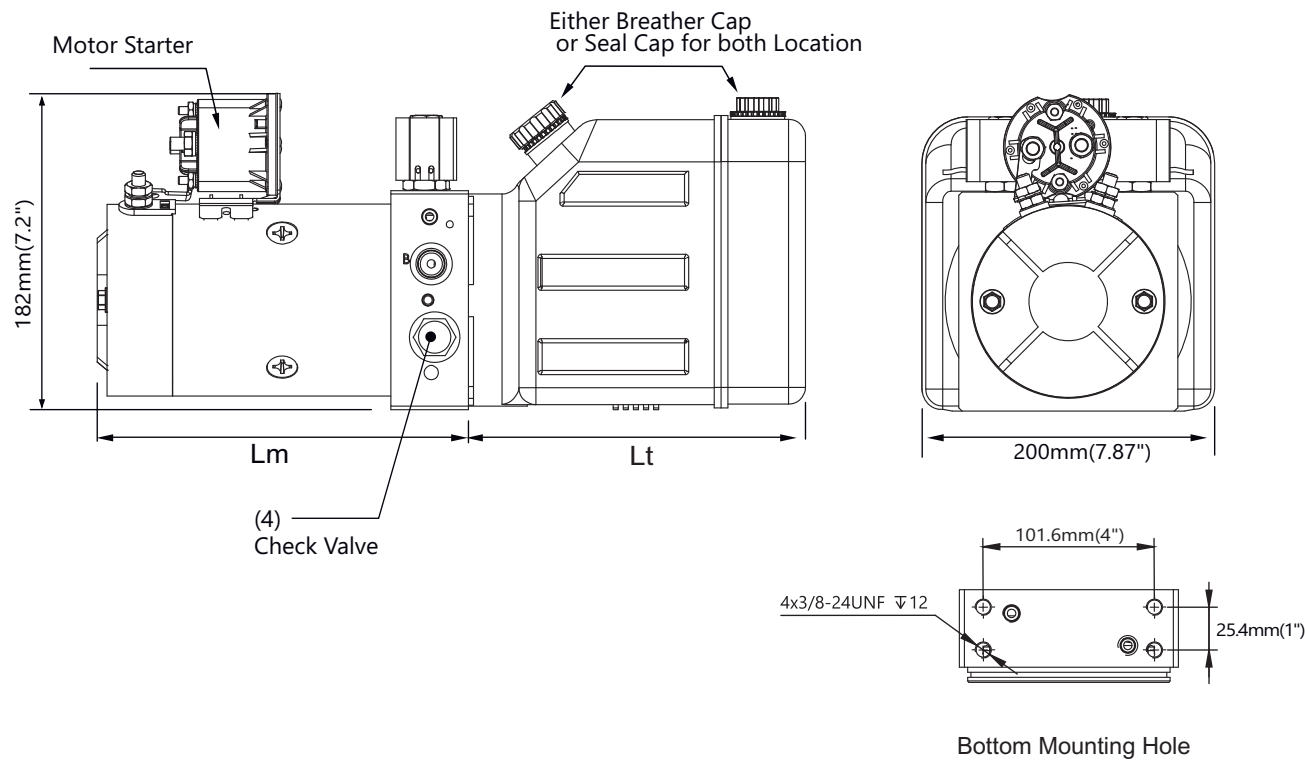
Outline Diemnsions

Group 16D/22D/25D/28D



	DP13M21-416	DP13M21-422	DP13M21-425	DP13M21-428
Dim "Lm"	8" (203mm)	8" (203mm)	8.78" (223mm)	9.85" (250mm)
Rated Power	1.6kW (12V)	2.2kW (24V)	2.5kW (12&24V)	2.8kw (24V)

RP tank showed in following drawings. The dimension "Lt" of RP tank or other optional tanks, please refer to Page N1-1.



DP13M07

Group 16D/22D/25D/28D/30D/40D (1.6kW to 4KW)

- Driving single acting hydraulic cylinder extending or retracting.

- Choose the appropriate power and pump size according to the load of your application. Please refer to Page A1-1 or consult us.

- Four options for controlling the Return Flow (down speed) by flow control valve (2):

1. Non-Adjustable.
2. Non Adjustable, with pressure compensate .
3. Adjustable, with pressure compensate .
4. No return flow control

- Three options for 2-way valve(1), more details refer to page DD.

1. Manual Valve.
2. Solenoid Valve.
3. Solenoid Valve with Manual Override

- Duty cycle is generally S2-1 minute, S3 - 15%.

It may be varies with loads , please consult us.

- Port P and T, standard options:

1. G3/8 (BSPP 3/8")
2. SAE#6(9/16-18UNF),
3. M14

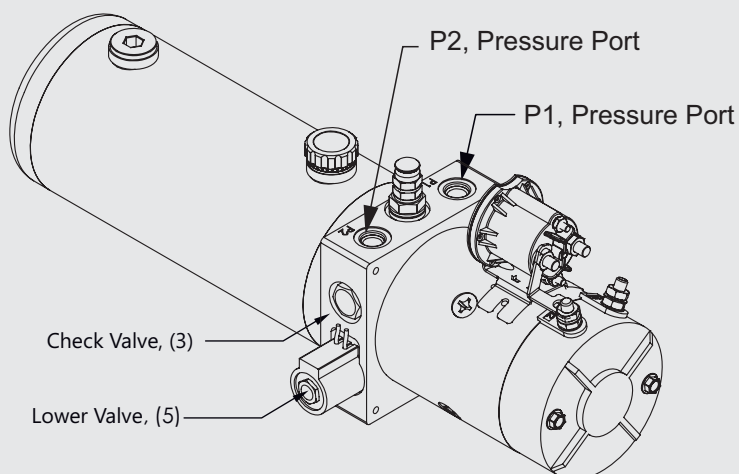
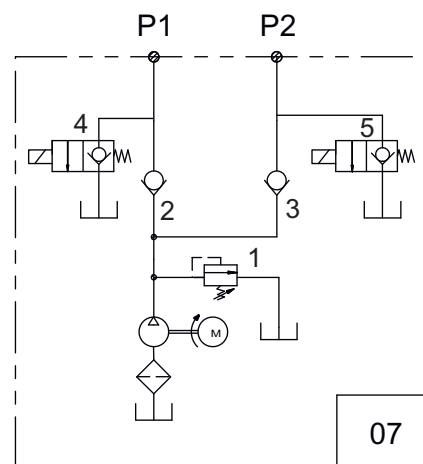
To custom-built other port size, please consult us.

- Optional Tanks:

Series RP, LS, LT, MS, MT, details refer to page BB.

- Controller Options:

- 1) KCB22, the basic remote control handset.
- 2) WRB22, economy wireless remote



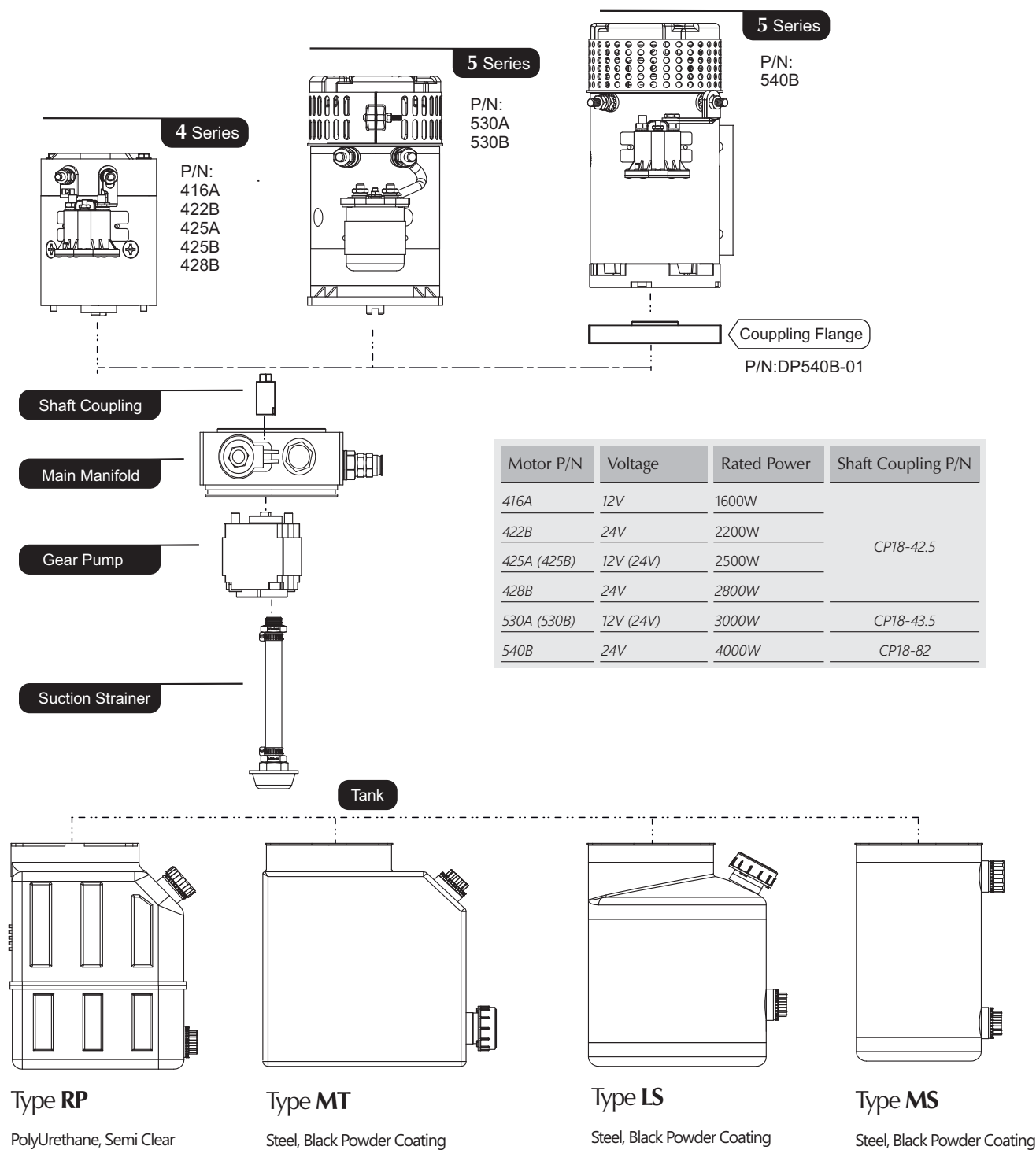
Function Type 07 – Single Acting, Two Outputs

DP13
Series

DC
Hydraulic Power Unit

DP13M07

DC Motor	4 Series,5 Series,(1600w-4kw)
Main Manifold	UD07A-01 (Machined Aluminum Manifold)
Gear Pump	G Series (Details refer to page G1-1)
Tank	Type RP, LS, LT, MS, MT, MR (Details refer to page N1)

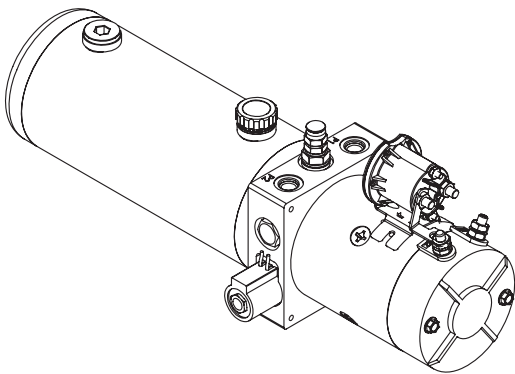


DP13M07-4

with 4" DC Motor

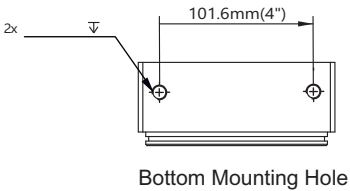
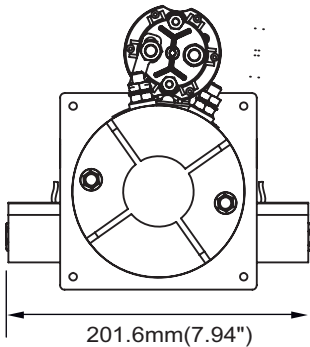
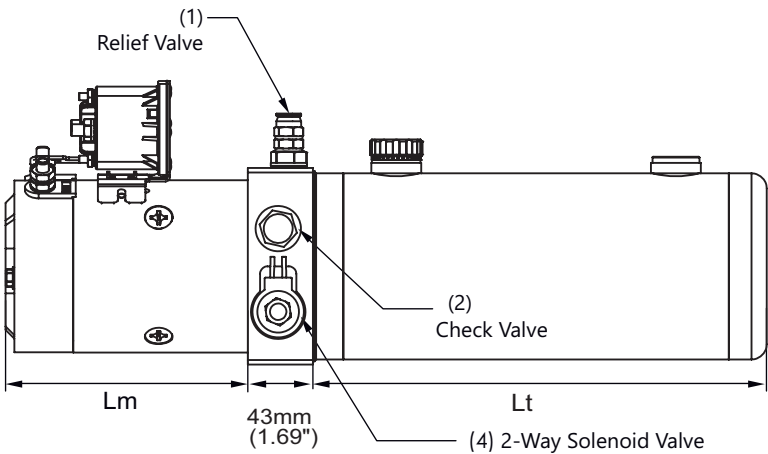
Outline Diemnsions

Group 16D/22D/25D/28D



	DP13M21 -416	DP13M21 -422	DP13M21 -425	DP13M21 -428
Dim "Lm"	8" (203mm)	8" (203mm)	8.78" (223mm)	9.85" (250mm)
Rated Power	1.6kW (12V)	2.2kW (24V)	2.5kW (12&24V)	2.8kw (24V)

MS tank showed in following drawings. The dimension "Lt" of MS tank or other optional tanks, please refer to Page N1-1.

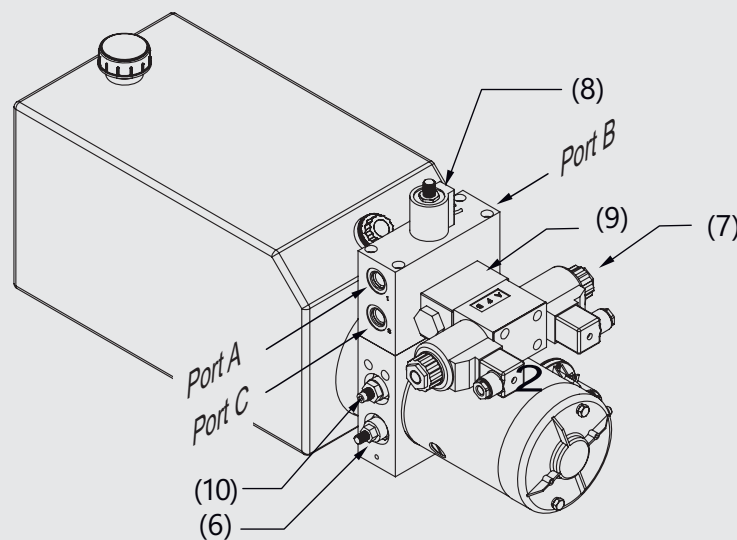
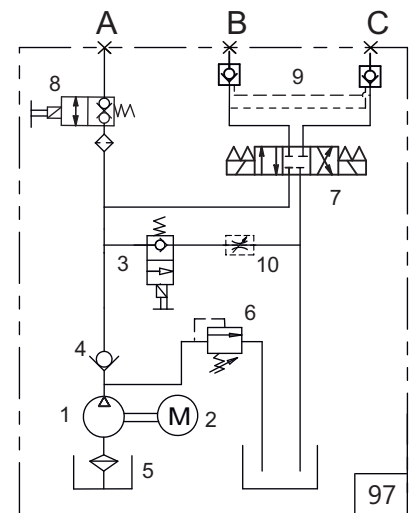


DP13M97

Group 16D/22D/25D/28D/30D/40D (1.6kW to 4KW)

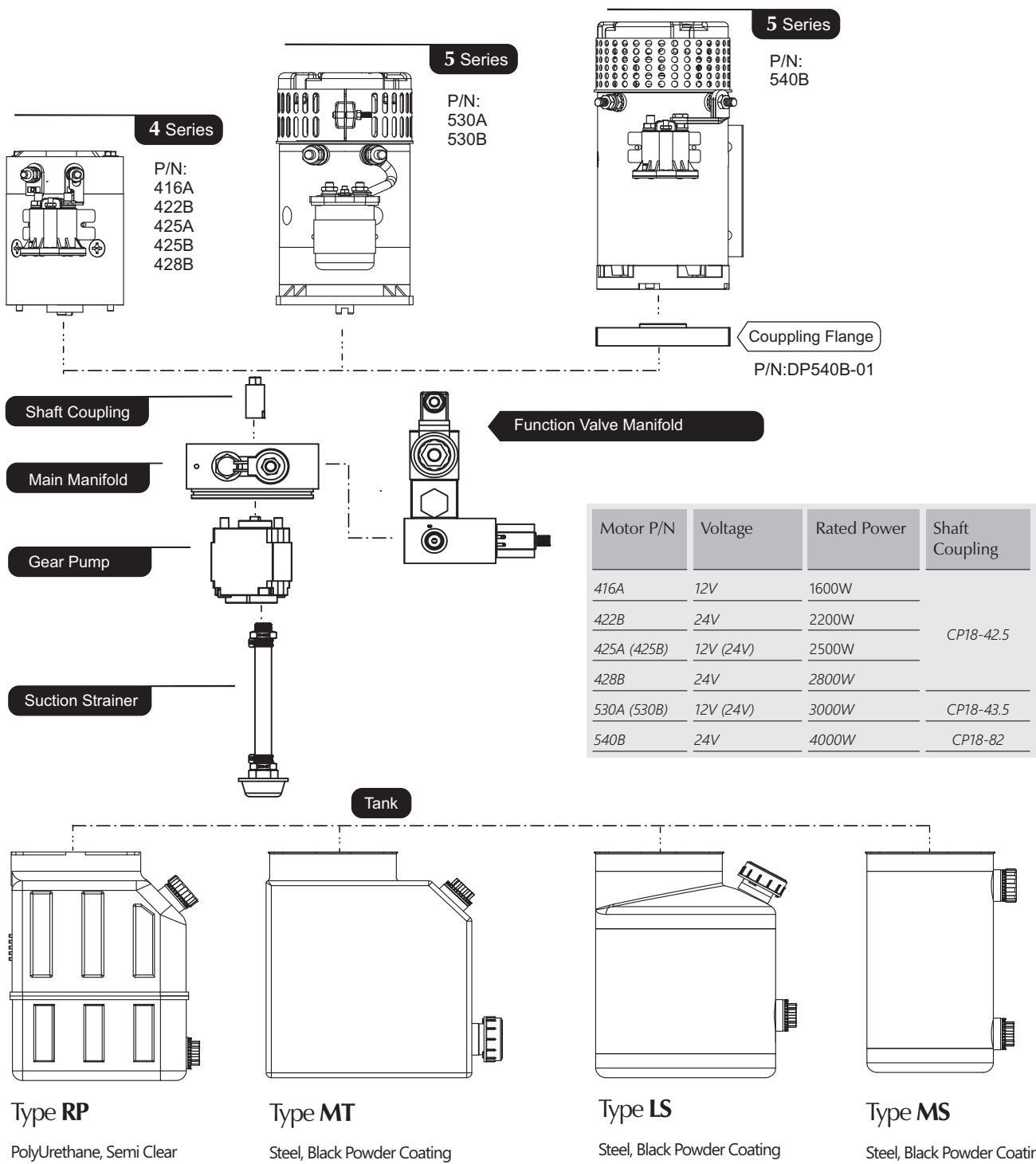
- Driving double acting hydraulic cylinder extending and retracting.
- Choose the appropriate power and pump size according to the load of your application.
Please refer to Page A1-1 or consult us.
- More options for 3W4P directional valve(3), more details refer to page DD.
 1. Solenoid Valve.
 2. Solenoid Valve with Manual Override
- Duty cycle is generally S2-1 minute, S3 - 15%.
It may be varies with loads , please consult us.
- Port A and B, standard options:
 1. G3/8 (BSPP 3/8")
 2. SAE#6 (9/16-18UNF),
 3. M14
 To custom-built other port size, please consult us.
- Optional Tanks:

Series RP, LS, LT, MS, MT, details refer to page BB.
- Controller Options:
 - 1) KCB42, the basic remote control handset.
 More details please refer to N2-1



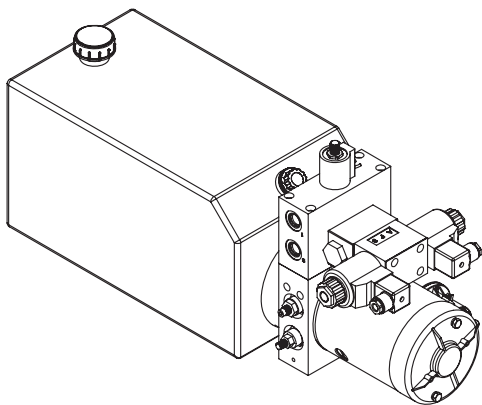
DP13M97

DC Motor	4 Series,5 Series,(1600w-4kw)
Main Manifold	UD97A-01 (Machined Aluminum Manifold)
Gear Pump	G Series (Details refer to page G1-1)
Tank	Type RP, LS, LT, MS, MT, MR (Details refer to page T01-04)



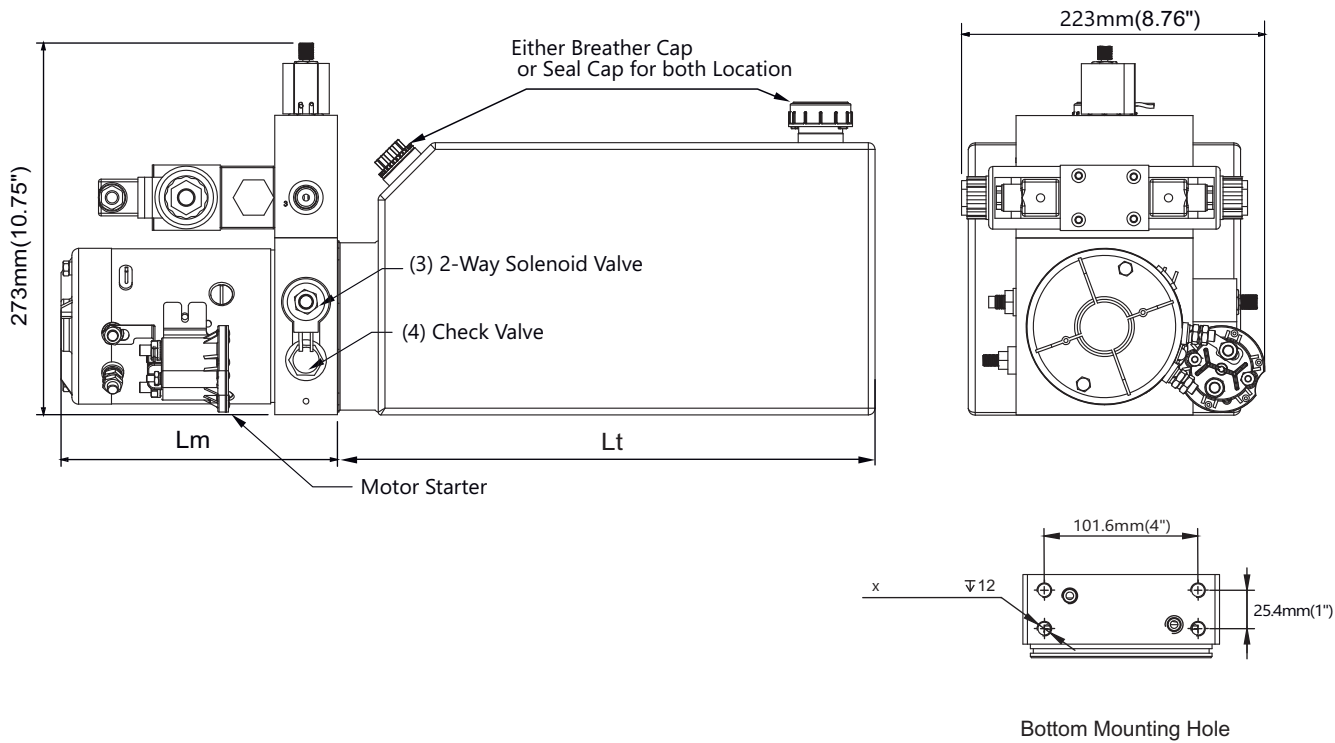
DP13M97-4

Outline Diemnsions
Group 16D/22D/25D/28D



	DP13M21 -416	DP13M21 -422	DP13M21 -425	DP13M21 -428
Dim "Lm"	8" (203mm)	8" (203mm)	8.78" (223mm)	9.85" (250mm)
Rated Power	1.6kW (12V)	2.2kW (24V)	2.5kW (12&24V)	2.8kw (24V)

MT tank showed in following drawings. The dimension "Lt" of MT tank or other optional tanks, please refer to Page N1-1.



DP13M39

- Driving 2 single acting hydraulic cylinder individually extending and retracting.

- Choose the appropriate power and pump size according to the load of your application. Please refer to Page A1-1 or consult us.

- Options for 2-way solenoid valve(7,8).

1. Solenoid Valve.
2. Solenoid Valve with Manual Override

- Duty cycle is generally S2-1 minute, S3 - 15%.
It may be varies with loads , please consult us.

- Port P1 and P2, standard options:

1. G3/8 (BSPP 3/8")
2. SAE#6(9/16-18UNF),
3. M14

To custom-built other port size, please consult us.

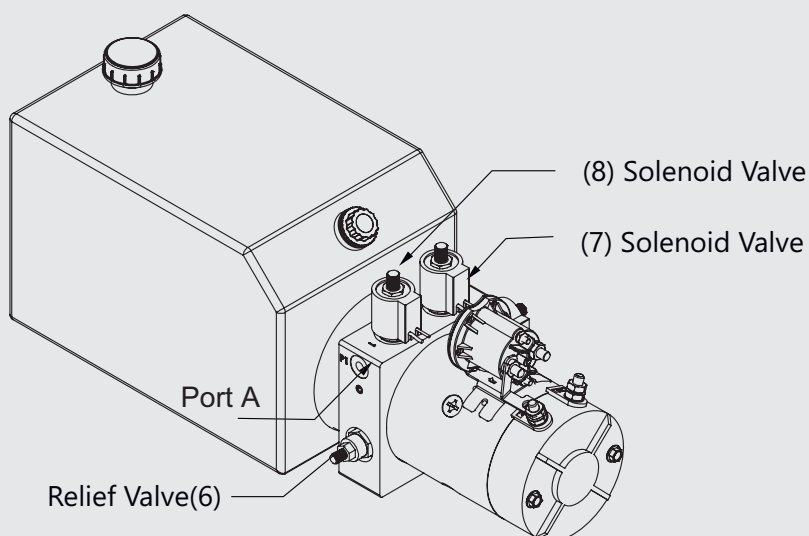
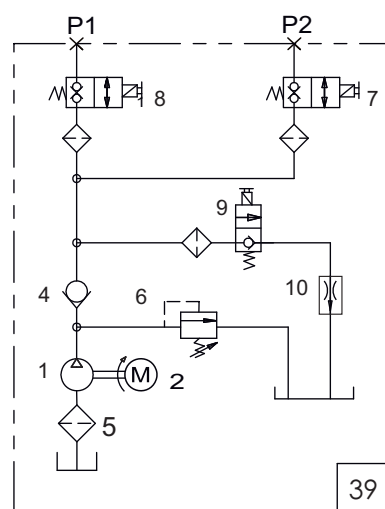
- Optional Tanks:

Series RP, LS, LT, MS, MT, details refer to page BB.

- Controller Options:

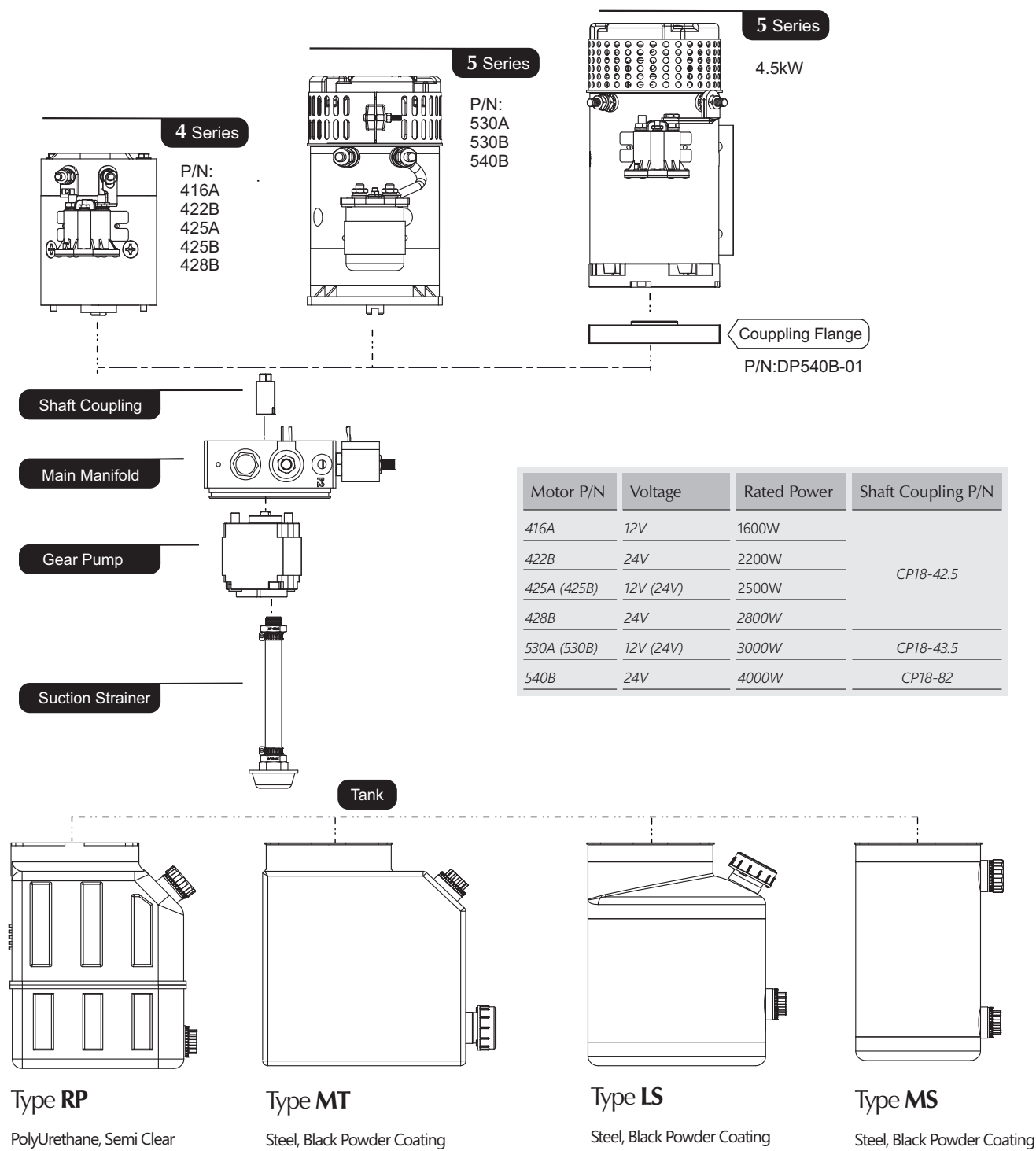
KCB42, 4-button basic remote control handset.

Consult us for more details.



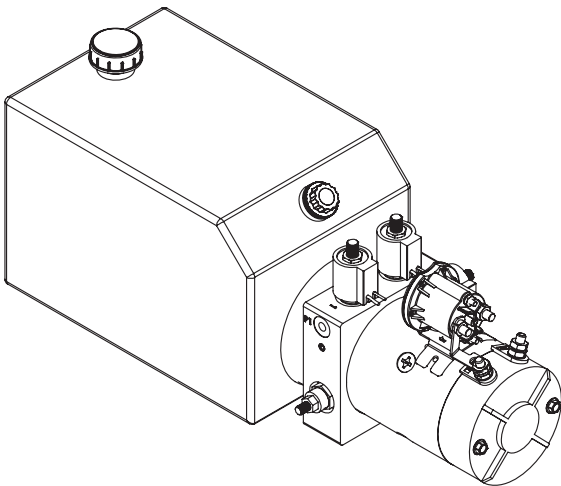
DP13M39

DC Motor	4 Series, 5 Series,(1600w-4kw)
Main Manifold	UD39A-01 (Machined Aluminum Manifold)
Gear Pump	G Series (Details refer to page G1-1)
Tank	Type RP, LS, LT, MS, MT, MR (Details refer to page N1)



DP13M39-4

Outline Diemnsions
Group 16D/22D/25D/28D



	DP13M39 -416	DP13M39 -422	DP13M39 -425	DP13M39 -428
Dim "Lm"	8" (203mm)	8" (203mm)	8.78" (223mm)	9.85" (250mm)
Rated Power	1.6kW (12V)	2.2kW (24V)	2.5kW (12&24V)	2.8kw (24V)

MT tank showed in following drawings. The dimension "Lt" of MT tank or other optional tanks, please refer to page N1-1.

