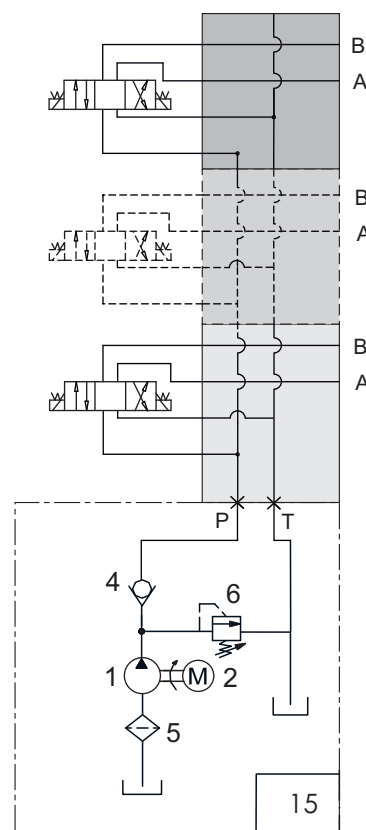


DP13H15

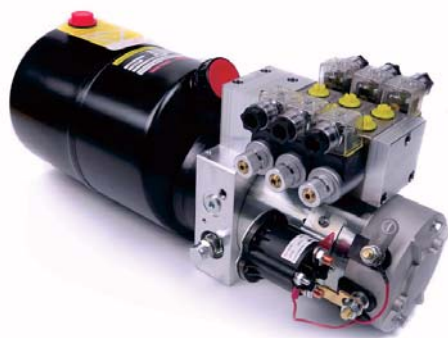
Group 16D/22D/25D/28D/30D/40D (1.6kW to 4KW)

Expandable Circuit Design

- Driving multi double acting hydraulic cylinders extending and retracting.
- Choose the appropriate power and pump size according to the load of your application. Please refer to Page A1-1 or consult us.
- Options for 3W4P directional valve(3), more details refer to page DD.
 1. Solenoid Directional Valve.
 2. Solenoid Directional Valve with Manual Override
- Duty cycle is generally S2-1 minute, S3 - 15%. It may be varies with loads , please consult us.
- Port A and B, standard options:
 1. G3/8 (BSPP 3/8")
 2. SAE#6(9/16-18UNF),
 3. M14
 To custom-built other port size, please consult us.
- Optional Tanks: Series RP, LS, LT, MS, MT, details refer to page BB.
- Controller Options:
 - 1) KCB Series, the basic remote control handset, able to control 5 paths.
 - 2) WRV Series, industrial grade wireless remote, able to control 3 paths max.
 More details please refer to N2-1



*1 Valves (paths) min, expandable up to 5 Sectional Valves.



Hydraulic Power Unit



Hydraulic Power Unit with Wireless Remote

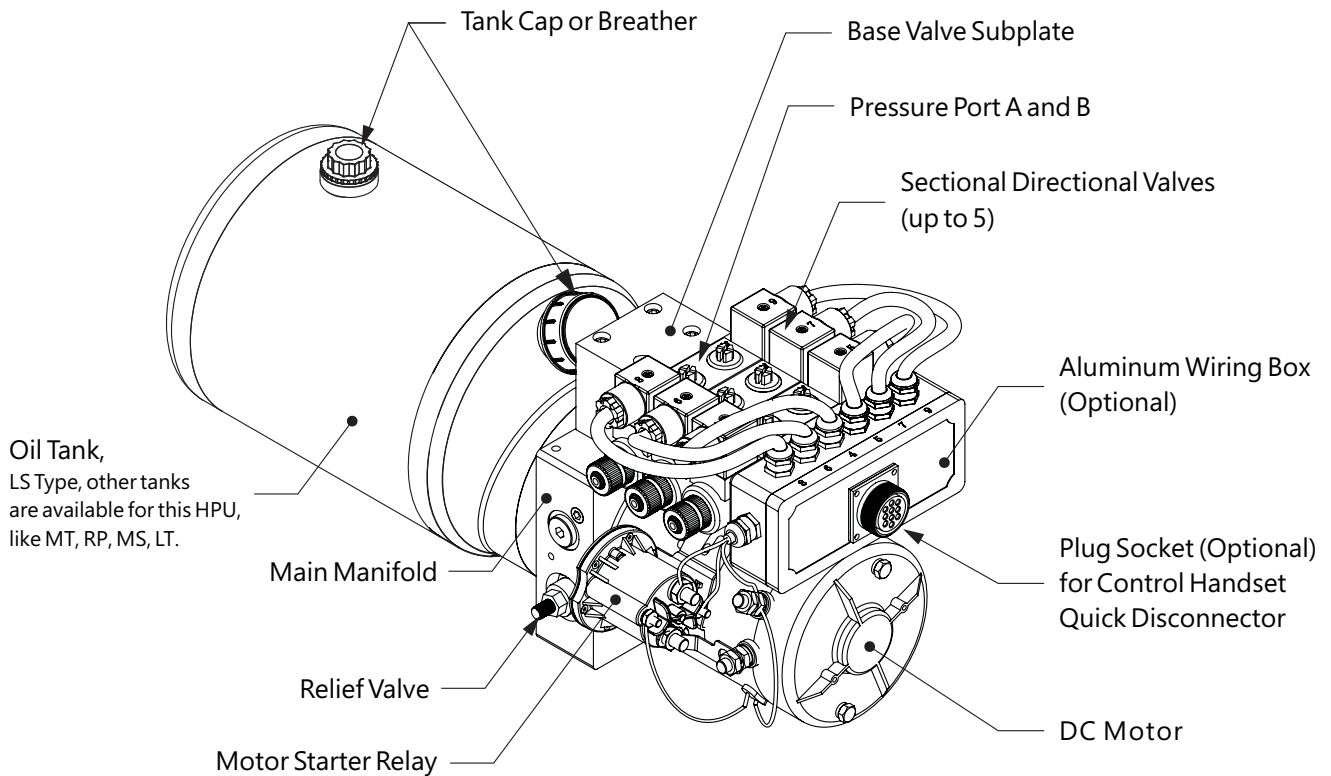
Function Type 15 - Double Acting

Expandable Circuit with Sectional Directional Valve

DP13

Series

DC
Hydraulic Power Unit



DP13 H 15 Y 3 - 4 16 A - RP1 - 01

(1) (2) (3) (4) (5) (6) (7) (8) (9) (10)

(1) DP13 Series - DC Hydraulic Power Unit

(2) Style of Directional Valve Stacking: V - Vertical Mounting, H - Horizontal Mounting

(3) Function Type (Hydraulic Circuit): 14 - Expandable Double Acting Circuit, with Cetop3 (D03) 3/4 Directional Valve.

15 - Expandable Double Acting Circuit, with Sectional 3/4 Directional Valve.

(4) Function Code of 3/4 Directional Valve

(5) Number of Directional Valves Installed

(6) Motor Size: 3- 3" Motor, 4- 4" Motor, 5- 5" Motor

(7) Rated Power of DC Motor:

3" DC Motor: 01 - 150W, 03 - 350W, 05 - 500W, 08 - 800W

4" DC Motor: 16 - 1.6kW, 22 - 2.2kW, 25 - 2.5kW, 28 - 2.8kW

5" DC Motor: 30 - 3.0kW, 40 - 4.0kW

(8) Voltage of DC Motor

(9) Code of Oil Tank

(10) Design Number, specified by Mocen.

Function Type 15 - Double Acting
Expandable Circuit with Sectional Directional Valve

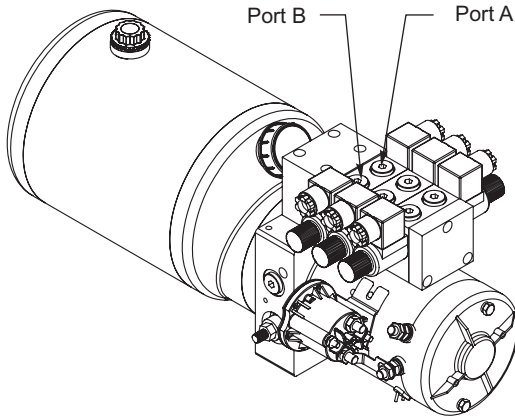
DP13
Series

DC
Hydraulic Power Unit

DP13H15-4 with 4" DC Motor

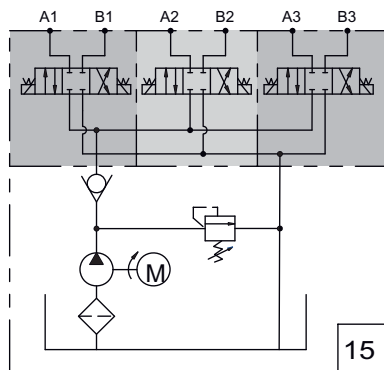
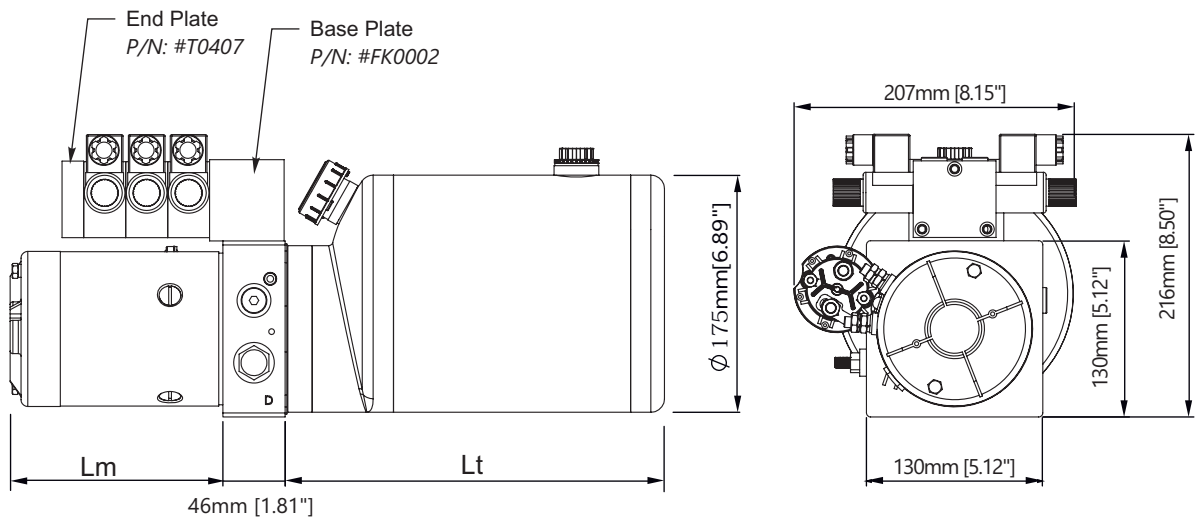
Outline Dimensions

Group 16D/22D/25D/28D

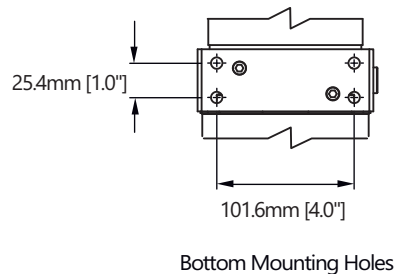


	DP13H14 -416	DP13H14 -422	DP13H14 -425	DP13H14 -428
Dim "Lm"	8" (203mm)	8" (203mm)	8.78" (223mm)	9.85" (250mm)
Rated Power	1.6kW (12V)	2.2kW (24V)	2.5kW (12&24V)	2.8kw (24V)

LS type tank showed in following drawings. The dimension "Lt" of LS tank or other optional tanks, please refer to Page N1-1.



Expandable, up to 5 sections



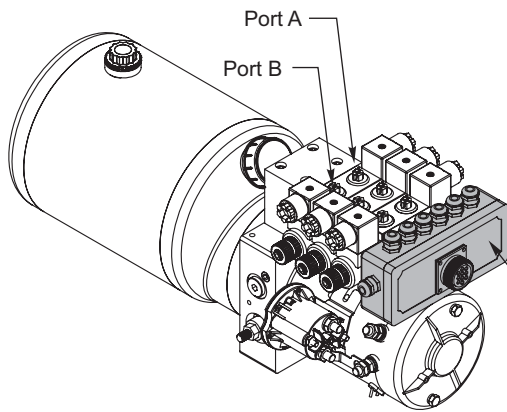
* More details about options on directional valve, please refer to the part of Sectional Directional Valves on Page L-01

Function Type 15 - Double Acting
Expandable Circuit with Sectional Directional Valve

DP13
Series

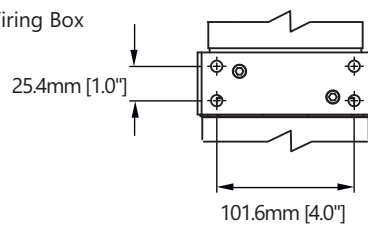
DC
Hydraulic Power Unit

DP13H15-4 With 4" DC Motor

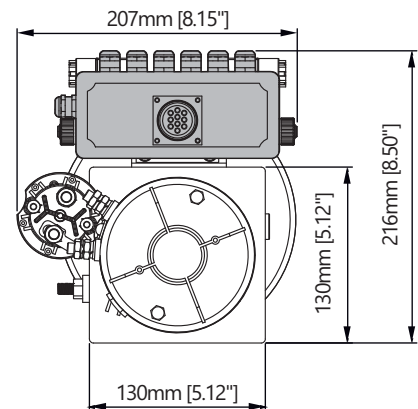
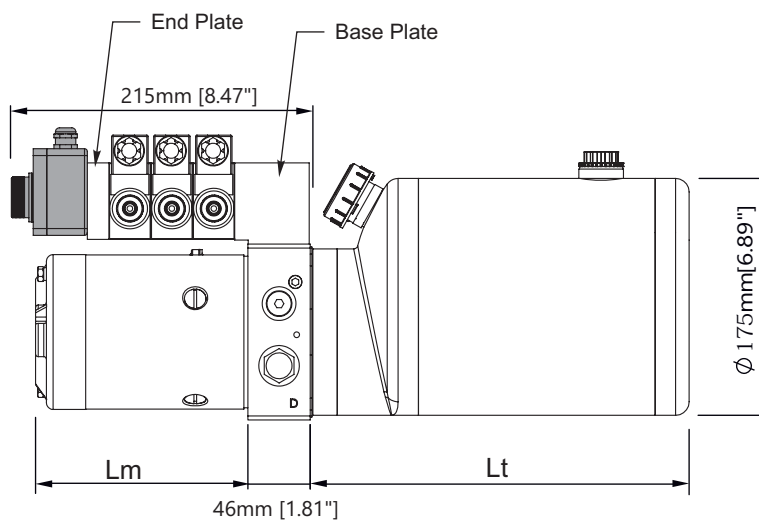


Dimensions with Optional Wiring Box Mounted

* More details about wireless remote, please refer to Page V-08



Bottom Mounting Holes



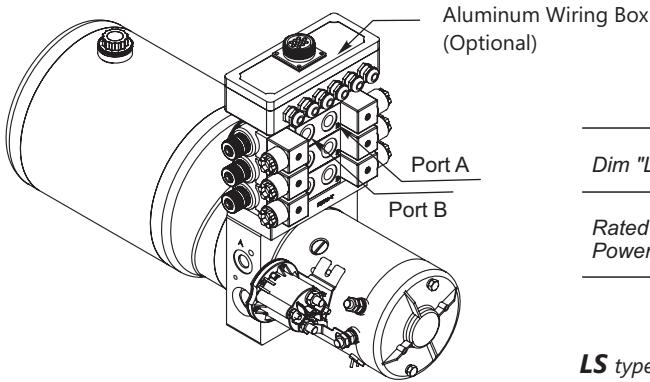
Function Type 15 - Double Acting
Expandable Circuit with Sectional Directional Valve

DP13
Series

DC
Hydraulic Power Unit

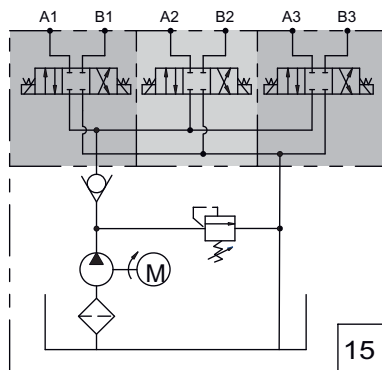
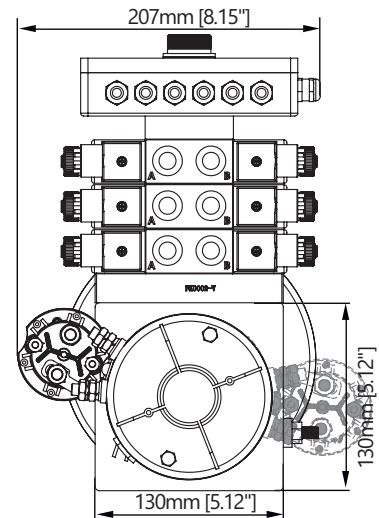
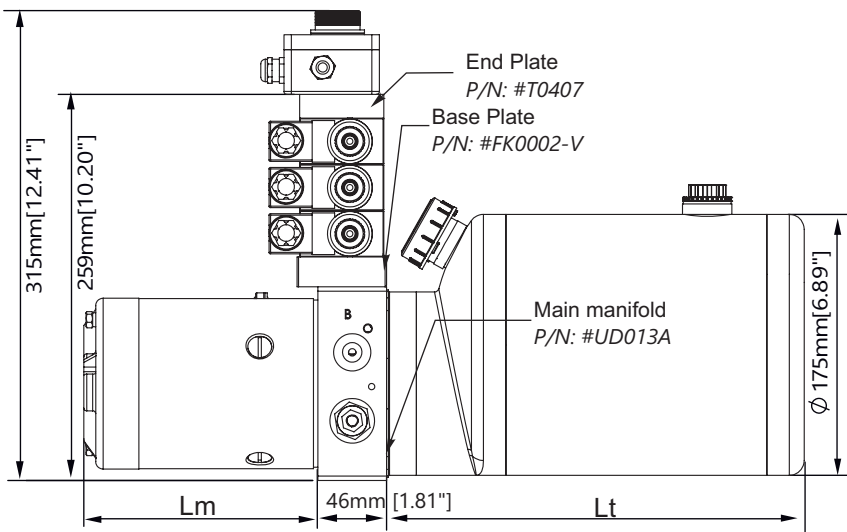
DP13V15-4 With 4" DC motor

Outline Dimensions
Group 16D/22D/25D/28D

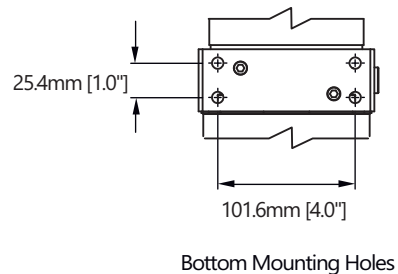


	DP13H14 -416	DP13H14 -422	DP13H14 -425	DP13H14 -428
Dim "Lm"	8" (203mm)	8" (203mm)	8.78" (223mm)	9.85" (250mm)
Rated Power	1.6kW (12V)	2.2kW (24V)	2.5kW (12&24V)	2.8kw (24V)

LS type tank showed in following drawings. The dimension "Lt" of LS tank or other optional tanks, please refer to Page N1-1.



Expandable, up to 5 sections



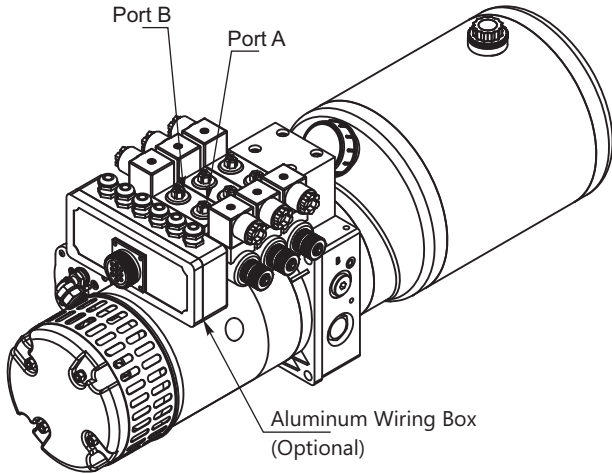
* More details about options on directional valve, please refer to the part of Sectional Directional Valves on Page L-01

Function Type 15 - Double Acting
Expandable Circuit with Sectional Directional Valve

DP13
Series

DC
Hydraulic Power Unit

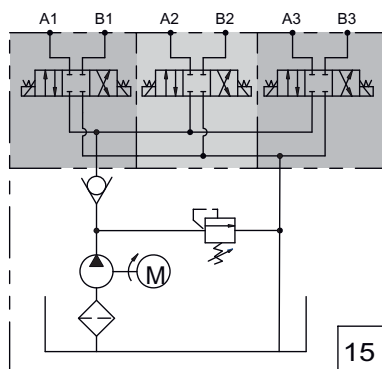
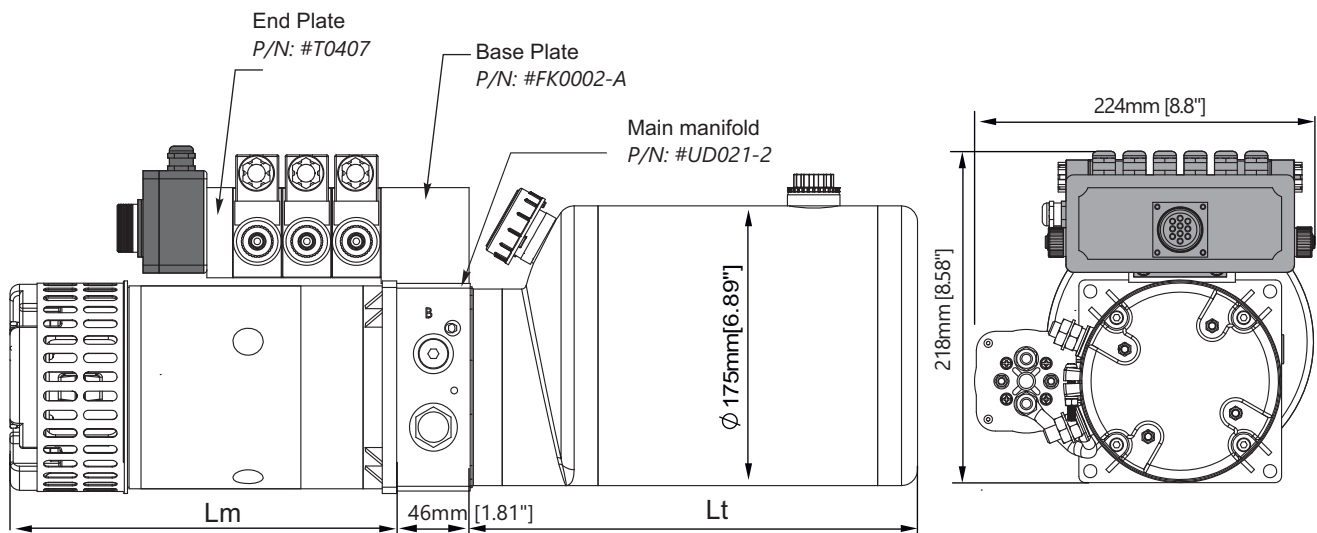
DP13H15-5 With 5" DC motor



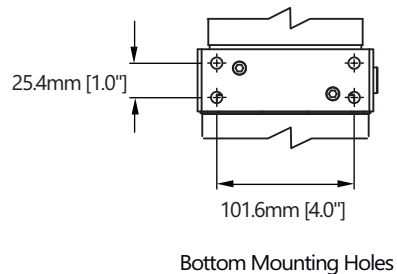
Outline Dimensions

Group 30D/40D

	DP13H15-530	DP13H15-540
Dim "Lm"	11.04" (280mm)	13.39" (340mm)
Rated Power	3.0kW, 12V	3.0kW, 24V



Expandable, up to 5 sections



* More details about options on directional valve, please refer to the part of Sectional Directional Valves on Page L-01

Function Type 15 - Double Acting
Expandable Circuit with Sectional Directional Valve

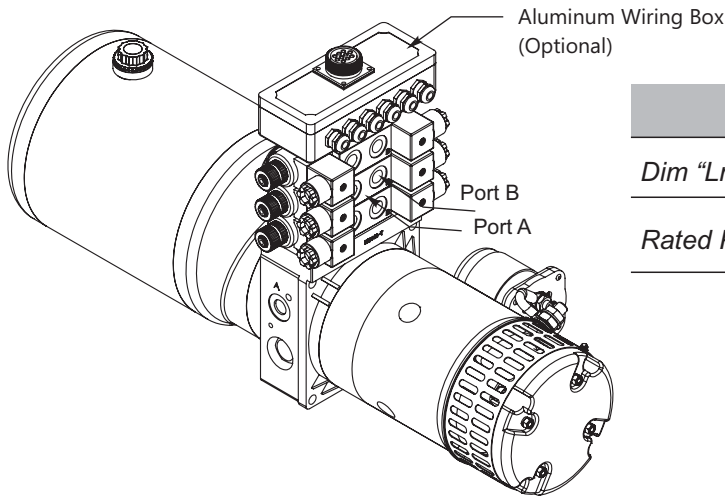
DP13
Series

DC
Hydraulic Power Unit

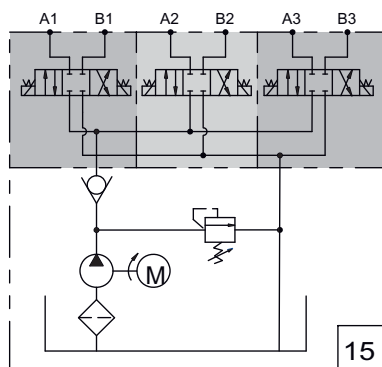
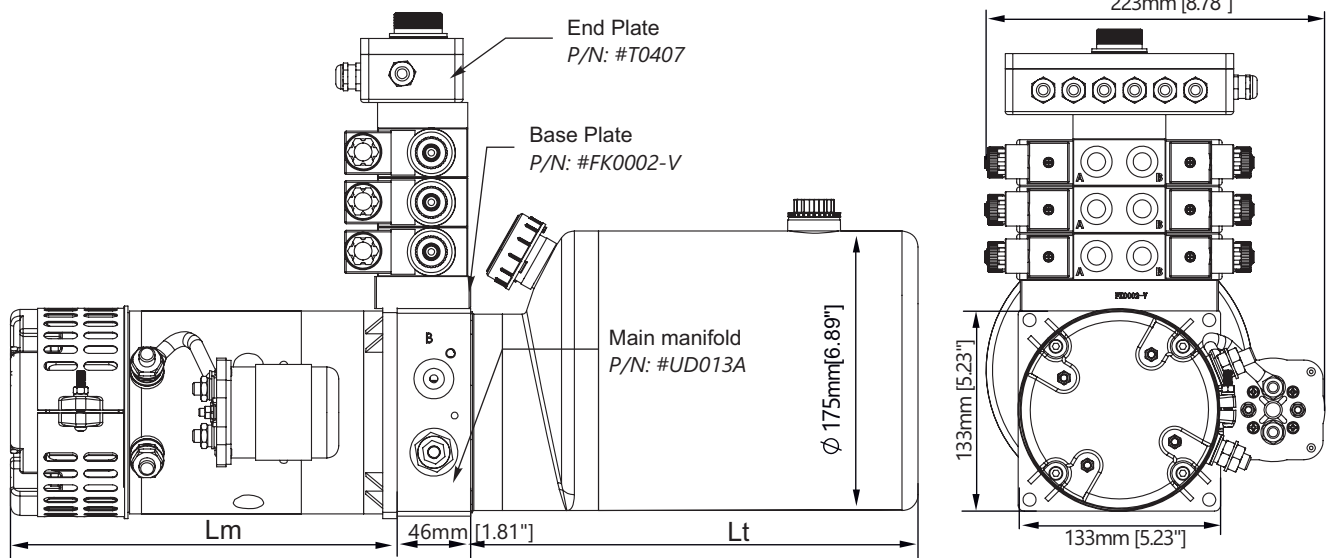
DP13V15-5 With 5" DC motor

Outline Dimensions

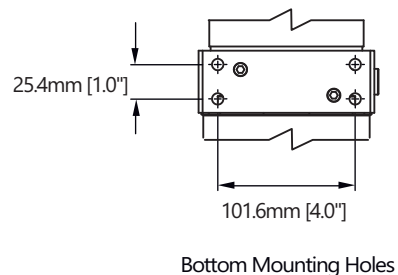
Group 30D/40D



	DP13H15-530	DP13H15-540
Dim "Lm"	11.04" (280mm)	13.39" (340mm)
Rated Power	3.0kW, 12V	3.0kW, 24V



Expandable, up to 5 sections



Bottom Mounting Holes

* More details about options on directional valve, please refer to the part of Sectional Directional Valves on Page L-01